

Recombinant Human FLT1 protein, His-Avi-tagged, Biotinylated

Cat. No. FLT1-3810H **Lot. No.** (See product label)

SPECIFICATION

Product Overview	Biotinylated Recombinant Human FLT1 protein(P17948-1)(Ser27-Asn756), fused with C-terminal His and Avi tag, was expressed in HEK293.
Species	Human
Source	HEK293
ProteinLength	Ser27-Asn756
Tag	C-His-Avi
Conjugation/Label	Biotin
Form	Lyophilized from 0.22µm filtered solution in PBS (pH 7.4). Normally 5% trehalose is added as protectant before lyophilization.
Bio-activity	Immobilized Human VEGF165 at 1ug/ml (100ul/well) on the plate. Dose response curve for Biotinylated Human VEGFR1, His Tag with the EC50 of 46.4ng/ml determined by ELISA.
Molecular Mass	The protein has a predicted MW of 85.1 kDa. Due to glycosylation, the protein migrates to 100-120 kDa based on Tris-Bis PAGE result.
Endotoxin	Less than 1EU per µg by the LAL method.

 Tel: 1-631-559-9269 1-516-512-3133

 Email: info@creative-biomart.com  Fax: 1-631-938-8127

 45-1 Ramsey Road, Shirley, NY 11967, USA

Purity	> 95% as determined by Tris-Bis PAGE
Storage	Reconstituted protein stable at -80°C for 12 months, 4°C for 1 week. Use a manual defrost freezer and avoid repeated freeze-thaw cycles.
Reconstitution	Centrifuge tubes before opening. Reconstituting to a concentration more than 100 µg/ml is recommended. Dissolve the lyophilized protein in distilled water.
Conjugation	Biotin

GENE INFORMATION

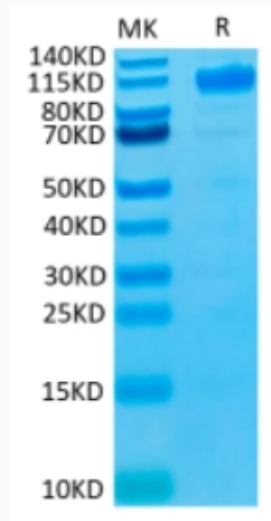
Gene Name	FLT1 fms-related tyrosine kinase 1 (vascular endothelial growth factor/vascular permeability factor receptor) [Homo sapiens]
Official Symbol	FLT1
Synonyms	FLT1; fms-related tyrosine kinase 1 (vascular endothelial growth factor/vascular permeability factor receptor); FLT; vascular endothelial growth factor receptor 1; VEGFR1; FLT-1; VEGFR-1; fms-like tyrosine kinase 1; tyrosine-protein kinase FRT; tyrosine-protein kinase receptor FLT; vascular permeability factor receptor;
Gene ID	2321
mRNA Refseq	NM_001159920
Protein Refseq	NP_001153392
MIM	165070
UniProt ID	P17948

 Tel: 1-631-559-9269 1-516-512-3133

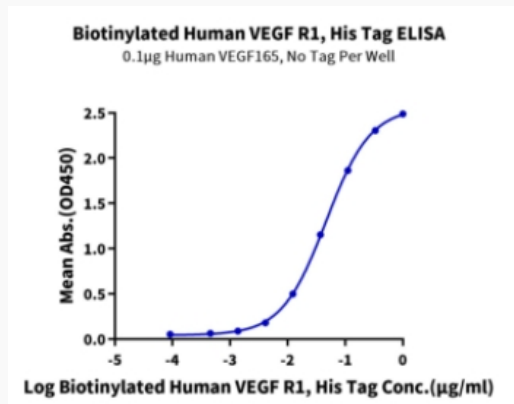
 Email: info@creative-biomart.com  Fax: 1-631-938-8127

 45-1 Ramsey Road, Shirley, NY 11967, USA

Tris-Bis PAGE



ELISA Data



 Tel: 1-631-559-9269 1-516-512-3133

 Email: info@creative-biomart.com  Fax: 1-631-938-8127

 45-1 Ramsey Road, Shirley, NY 11967, USA