

## Recombinant Human FLT3 Protein, C-His-tagged

Cat. No. FLT3-038H Lot. No. (See product label)

### SPECIFICATION

<b>Product Overview</b>	Recombinant Human FLT3 Protein with C-His tag was expressed in E. coli.
<b>Species</b>	Human
<b>Source</b>	E.coli
<b>Description</b>	<p>FMS-related tyrosine kinase 3 (FLT3, also called Flk2), is a member of the type III receptor tyrosine kinase family, which includes c-Kit, PDGFR and M-CSF receptors. FLT3 is expressed on early hematopoietic progenitor cells and supports growth and differentiation within the hematopoietic system. FLT3 is activated after binding with its ligand FL, which results in a cascade of tyrosine autophosphorylation and tyrosine phosphorylation of downstream targets. The p85 subunit of PI3 kinase, SHP2, GRB2 and Shc are associated with FLT3 after FL stimulation. Tyr589/591 is located in the juxtamembrane region of FLT3 and may play an important role in regulation of FLT3 tyrosine kinase activity. Somatic mutations of FLT3 consisting of internal tandem duplications (ITDs) occur in 20% of patients with acute myeloid leukemia.</p>
<b>Molecular Mass</b>	~57 kDa
<b>AA Sequence</b>	<p>NQDLPVIKCVLINHKNDSSVKGSSSYPMVSESPEDLGCALRPQSSGTVYEEAAVE  VDVSASITLQVLVDAPGNISCLWVFKHSSLNCQPHFDLQNRGVVSMVILKMTETQAG  EYLLFIQSEATNYTILFTVSIRNTLLYTLRRPYFRKMENQDALVCISESVPEPIVEWVLC  DSQGESCKEESPAVVKKEEKVLHELFGTDIRCCARNELGRECTRLFTIDLNQTPQTT  LPQLFLKVGPEPLWIRCKAVHVNHGFGLTWELENKALEEGNYFEMSTYSTNRTMIRIL</p>

 Tel: 1-631-559-9269 1-516-512-3133

 Email: [info@creative-biomart.com](mailto:info@creative-biomart.com)  Fax: 1-631-938-8127

 45-1 Ramsey Road, Shirley, NY 11967, USA

FAFVSSVARNDTGYYTCSSSKHPSQSALVTIVEKGFINATNSSSEIDQYEEFCFSV  
 RFKAYPQIRCTWTFSRKSFPCEQKGLDNGYSISKFCNHKHQPGEYIFHAENDDAQF  
 TKMFTLNIRRKPVLAEASASQASCFSGDYPLPSWTWKKCSDKSPNCTEEITEGVW  
 NRKANRKVFGQWVSSSTLNMSEAIKGLVKCCAYNSLGTSCETILLNSPGPFPIQD  
 NIS

**Purity** Transferred into competent cells and the supernatant was purified by NI column affinity chromatography and the purity is > 85% (by SDS-PAGE).

**Notes** For research use only, not for use in diagnostic procedure.

**Storage** Store at 4 centigrade short term. Aliquot and store at -20 centigrade long term. Avoid freeze-thaw cycles.

**Concentration** ≥0.5 mg/mL

**Storage Buffer** PBS, 4M Urea, pH7.4

## GENE INFORMATION

**Gene Name** FLT3 fms-related tyrosine kinase 3 [ Homo sapiens (human) ]

**Official Symbol** FLT3

**Synonyms** FLT3; fms-related tyrosine kinase 3; receptor-type tyrosine-protein kinase FLT3; CD135; FLK2; STK1; STK-1; CD135 antigen; FL cytokine receptor; fetal liver kinase 2; fms-like tyrosine kinase 3; stem cell tyrosine kinase 1; growth factor receptor tyrosine kinase type III; FLK-2;

**Gene ID** 2322

 Tel: 1-631-559-9269 1-516-512-3133

 Email: [info@creative-biomart.com](mailto:info@creative-biomart.com)  Fax: 1-631-938-8127

 45-1 Ramsey Road, Shirley, NY 11967, USA

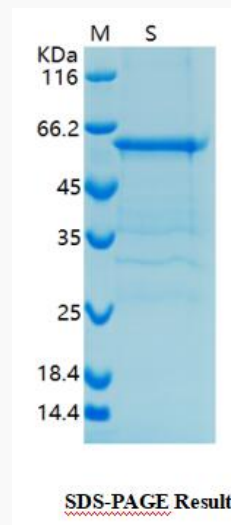
mRNA Refseq NM\_004119

Protein Refseq NP\_004110

MIM 136351

UniProt ID P36888

**SDS-PAGE**



 Tel: 1-631-559-9269 1-516-512-3133

 Email: [info@creative-biomart.com](mailto:info@creative-biomart.com)  Fax: 1-631-938-8127

 45-1 Ramsey Road, Shirley, NY 11967, USA