

## Active Recombinant Human FLT3 Protein, GST-tagged

Cat. No. FLT3-4370H Lot. No. (See product label)

### SPECIFICATION

<b>Product Overview</b>	Human PDK3 (NP_004110.2, 546 a.a. - 993 a.a.) partial recombinant protein with GST tag expressed in Baculovirus infected Sf21 cells.
<b>Species</b>	Human
<b>Source</b>	Insect Cells
<b>ProteinLength</b>	546-993 a.a.
<b>Description</b>	<p>This gene encodes a class III receptor tyrosine kinase that regulates hematopoiesis. The receptor consists of an extracellular domain composed of five immunoglobulin-like domains, one transmembrane region, and a cytoplasmic kinase domain split into two parts by a kinase-insert domain. The receptor is activated by binding of the fms-related tyrosine kinase 3 ligand to the extracellular domain, which induces homodimer formation in the plasma membrane leading to autophosphorylation of the receptor. The activated receptor kinase subsequently phosphorylates and activates multiple cytoplasmic effector molecules in pathways involved in apoptosis, proliferation, and differentiation of hematopoietic cells in bone marrow. Mutations that result in the constitutive activation of this receptor result in acute myeloid leukemia and acute lymphoblastic leukemia. [provided by RefSeq</p>
<b>Form</b>	Liquid
<b>Bio-activity</b>	The activity was measured by off-chip mobility shift assay. The enzyme was incubated with fluorescence-labeled substrate and Mg (or Mn)/ATP. The

 Tel: 1-631-559-9269 1-516-512-3133

 Email: [info@creative-biomart.com](mailto:info@creative-biomart.com)  Fax: 1-631-938-8127

 45-1 Ramsey Road, Shirley, NY 11967, USA

phosphorylated and unphosphorylated substrates were separated and detected by LabChip™3000.  
 Substrate: Src tide.  
 ATP: 100 μM.

<b>Molecular Mass</b>	77 kDa
<b>Purity</b>	98% by SDS-PAGE/CBB staining
<b>Applications</b>	Functional Study SDS-PAGE
<b>Storage</b>	Store at -80 centigrade. Aliquot to avoid repeated freezing and thawing.
<b>Storage Buffer</b>	In 50 mM Tris-HCl, 150 mM NaCl, pH 7.5 (0.05% Brij35, 1 mM DTT, 10% glycerol)

## GENE INFORMATION

<b>Gene Name</b>	<a href="#">FLT3 fms-related tyrosine kinase 3 [ Homo sapiens ]</a>
<b>Official Symbol</b>	<a href="#">FLT3</a>
<b>Synonyms</b>	FLT3; fms-related tyrosine kinase 3; receptor-type tyrosine-protein kinase FLT3; CD135; FLK2; STK1; STK-1; CD135 antigen; FL cytokine receptor; fetal liver kinase 2; fms-like tyrosine kinase 3; stem cell tyrosine kinase 1; growth factor receptor tyrosine kinase type III; FLK-2;
<b>Gene ID</b>	<a href="#">2322</a>
<b>mRNA Refseq</b>	<a href="#">NM_004119</a>

 Tel: 1-631-559-9269 1-516-512-3133

 Email: [info@creative-biomart.com](mailto:info@creative-biomart.com)  Fax: 1-631-938-8127

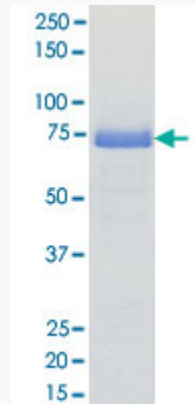
 45-1 Ramsey Road, Shirley, NY 11967, USA

**Protein Refseq** NP\_004110

**MIM** 136351

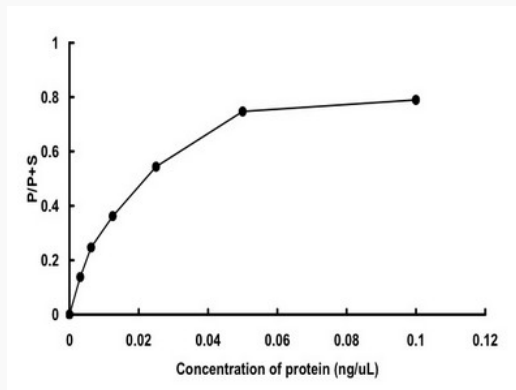
**UniProt ID** P36888

**Quality Control Testing**



Loading 1  $\mu$ g protein in SDS-PAGE

**Result of activity analysis**



 Tel: 1-631-559-9269 1-516-512-3133

 Email: [info@creative-biomart.com](mailto:info@creative-biomart.com)  Fax: 1-631-938-8127

 45-1 Ramsey Road, Shirley, NY 11967, USA