

Recombinant Full Length Human FLT3 Protein, C-Flag-tagged

Cat. No. FLT3-984HFL Lot. No. (See product label)

SPECIFICATION

Product Overview	Recombinant Full Length Human FLT3 Protein, fused to Flag-tag at C-terminus, was expressed in Mammalian cells.
Species	Human
Source	Mammalian Cells
Description	This gene encodes a class III receptor tyrosine kinase that regulates hematopoiesis. This receptor is activated by binding of the fms-related tyrosine kinase 3 ligand to the extracellular domain, which induces homodimer formation in the plasma membrane leading to autophosphorylation of the receptor. The activated receptor kinase subsequently phosphorylates and activates multiple cytoplasmic effector molecules in pathways involved in apoptosis, proliferation, and differentiation of hematopoietic cells in bone marrow. Mutations that result in the constitutive activation of this receptor result in acute myeloid leukemia and acute lymphoblastic leukemia.
Form	25 mM Tris HCl, pH 7.3, 100 mM glycine, 10% glycerol.
Molecular Mass	112.7 kDa
AA Sequence	MPALARGGGQLPLLVVFSAMIFGTITNQDLPVIKCVLINHKNNDSSVKGSSSYPMVSE SPEDLGCALRPQ SSGTVYEAAAVEVDVSASITLQVLVDAPGNISCLWVFKHSSLNC QPHFDLQNRGVVSMVILKMTETQAGE YLLFIQSEATNYTILFTVSIRNTLLYTLRRPY FRKMENQDALVCISESVPEPIVEWVLCDSQGESCKEES PAVVKKEEKVLHELFGMD IRCCARNELGRECTRLFTIDLNQTPQTTLPLQLFKVGEPLWIRCKAVHVNHG FGLTW

 Tel: 1-631-559-9269 1-516-512-3133

 Email: info@creative-biomart.com  Fax: 1-631-938-8127

 45-1 Ramsey Road, Shirley, NY 11967, USA

ELENKALEEGNYFEMSTYSTNRTMIRILFAFVSSVARNDTGYYTCSSSKHPSQSALV
TIVEKGFI NATNSSEIDQYEEFCFSVRFKAYPQIRCTWTFSRKSFPCEQKGLDN
GYSISKFCNHHKHQPGEYIFHA ENDDAQFTKMFTLNIRRKPVLAEEASASQASCFS
GYPLPSWTWKKCSDKSPNCTEEITEGVWNRKANRK VFGQWVSSSTLNMSEAIKGF
LVKCCAYNSLGTSCETILLNSPGPPFIQDNISFYATIGVCLLFIVVLT LICHKYKKQF
RYESQLQMVQVTGSSDNEYFYVDFREYDYDLKWEFPRENLEFGKVLGSGAFGKVM
NATAY GISKTGVSIVAVKMLKEKADSSEREALMSELKMMTQLGSHENIVNLLGACT
LSGPIYLIFEYCCYGDLL NYLRSKREKFHRTWTEIFKEHNFSFYPTFQSHPNSSMPG
SREVQIHPDSDQISGLHGNSFHSEDEIEYEN QKRLEEEEDLNVLTFEDLLCFAYQVA
KGMEFLEFKSCVHRDLAARNVLVTHGKVVKICDFGLARDIMSDS NYVVVRGNARLPV
KWMAPESLFEGIYTIKSDVWSYGILLWEIFSLGVNPYPGIPVDANFYKLIQNGFKMDQ
PFYATEEIIIMQSCWAFDSRKRPSFPNLTSFLGCQLADAEEMYQNVDGRVSECPH
TYQNRPFREMD
LGLLSPQAQVEDSTRTRPLEQKLISEEDLAANDILDYKDDDDKV

Purity

> 80% as determined by SDS-PAGE and Coomassie blue staining.

Stability

Stable for 12 months from the date of receipt of the product under proper storage and handling conditions. Avoid repeated freeze-thaw cycles.

Storage

Store at -80 centigrade.

Concentration

>50 ug/mL as determined by microplate BCA method.

Preparation

Recombinant protein was captured through anti-DDK affinity column followed by conventional chromatography steps.

Protein Families

Druggable Genome, ES Cell Differentiation/IPS, Protein Kinase, Transmembrane

Protein Pathways

Acute myeloid leukemia, Cytokine-cytokine receptor interaction, Hematopoietic cell

 Tel: 1-631-559-9269 1-516-512-3133

 Email: info@creative-biomart.com  Fax: 1-631-938-8127

 45-1 Ramsey Road, Shirley, NY 11967, USA



lineage, Pathways in cancer

Full Length

Full L.

GENE INFORMATION

Gene Name

FLT3 fms related receptor tyrosine kinase 3 [Homo sapiens (human)]

Official Symbol

FLT3

Synonyms

FLK2; STK1; CD135; FLK-2

Gene ID

2322

mRNA Refseq

NM_004119.3

Protein Refseq


NP_004110.2

MIM

136351

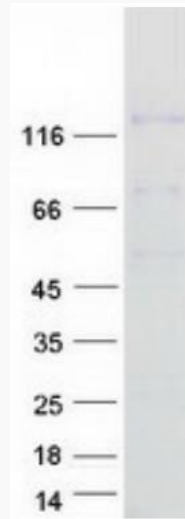
UniProt ID

P36888

 Tel: 1-631-559-9269 1-516-512-3133

 Email: info@creative-biomart.com  Fax: 1-631-938-8127

 45-1 Ramsey Road, Shirley, NY 11967, USA



Coomassie blue staining of purified FLT3 protein.

 Tel: 1-631-559-9269 1-516-512-3133

 Email: info@creative-biomart.com  Fax: 1-631-938-8127

 45-1 Ramsey Road, Shirley, NY 11967, USA