

Active Recombinant Human FLT4 protein, His-tagged

Cat. No. FLT4-37H Lot. No. (See product label)

SPECIFICATION

Product Overview	Active Recombinant Human FLT4 protein(Met 1-Ile 776)(NP_002011.2) was expressed in HEK293 with a C-terminal polyhistidine tag.
Species	Human
Source	HEK293
ProteinLength	1-776 aa
Form	Lyophilized from sterile PBS, pH 7.4.
Bio-activity	1. Measured by its binding ability in a functional ELISA. Immobilized human VEGF-C at 10 µg/mL (100 µl/well) can bind human VEGFR3-his. The EC50 of human VEGFR3-his is 0.011 µg/mL. 2. Measured by its ability to bind human VEGF-D in a functional ELISA.
Molecular Mass	The recombinant human VEGF R3 consists of 763 amino acids and predicts a molecular mass of 86 kDa. As a result of glycosylation, rhVEGFR3 migrates as an approximately 130 kDa in non-reduced SDS-PAGE.
Endotoxin	< 1.0 EU per µg of the protein as determined by the LAL method.
Purity	> 97 % as determined by SDS-PAGE
Storage	Store it under sterile conditions at -20°C to -80°C upon receiving. Recommend to

 Tel: 1-631-559-9269 1-516-512-3133

 Email: info@creative-biomart.com  Fax: 1-631-938-8127

 45-1 Ramsey Road, Shirley, NY 11967, USA

aliquot the protein into smaller quantities for optimal storage. Avoid repeated freeze-thaw cycles.

Reconstitution

It is recommended that sterile water be added to the vial to prepare a stock solution of 0.2 ug/ul. Centrifuge the vial at 4°C before opening to recover the entire contents.

GENE INFORMATION

Gene Name [FLT4 fms-related tyrosine kinase 4 \[Homo sapiens \]](#)

Official Symbol [FLT4](#)

Synonyms

FLT4; fms-related tyrosine kinase 4; vascular endothelial growth factor receptor 3; PCL; VEGFR3; FLT-4; VEGFR-3; soluble VEGFR3 variant 1; soluble VEGFR3 variant 2; soluble VEGFR3 variant 3; fms-like tyrosine kinase 4; tyrosine-protein kinase receptor FLT4; FLT41; LMPH1A;

Gene ID [2324](#)

mRNA Refseq [NM_002020](#)

Protein Refseq [NP_002011](#)

MIM [136352](#)

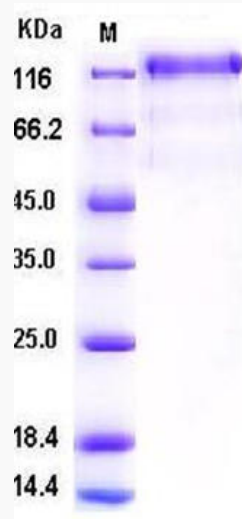
UniProt ID [P35916](#)

 Tel: 1-631-559-9269 1-516-512-3133

 Email: info@creative-biomart.com  Fax: 1-631-938-8127

 45-1 Ramsey Road, Shirley, NY 11967, USA

SDS-PAGE



 Tel: 1-631-559-9269 1-516-512-3133

 Email: info@creative-biomart.com  Fax: 1-631-938-8127

 45-1 Ramsey Road, Shirley, NY 11967, USA