

Recombinant Human FLT4 Protein, GST-tagged

Cat. No. FLT4-4379H Lot. No. (See product label)

SPECIFICATION

Product Overview	Human FLT4 partial ORF (NP_002011, 34 a.a. - 133 a.a.) recombinant protein with GST-tag at N-terminal.
Species	Human
Source	Wheat Germ
Description	This gene encodes a tyrosine kinase receptor for vascular endothelial growth factors C and D. The protein is thought to be involved in lymphangiogenesis and maintenance of the lymphatic endothelium. Mutations in this gene cause hereditary lymphedema type IA. [provided by RefSeq
Molecular Mass	36.63 kDa
AA Sequence	ITEESHVIDTGDSLISCRGQHLEWAWPGAQEAPATGDKDSEDTGVVRDCEGTDA RPYCKVLLLHEVHANDTGSYVCYYKYIKARIEGTTAASSYVFVR
Applications	Enzyme-linked Immunoabsorbent Assay Western Blot (Recombinant protein) Antibody Production Protein Array
Notes	Best use within three months from the date of receipt of this protein.
Storage	Store at -80 centigrade. Aliquot to avoid repeated freezing and thawing.

 Tel: 1-631-559-9269 1-516-512-3133

 Email: info@creative-biomart.com  Fax: 1-631-938-8127

 45-1 Ramsey Road, Shirley, NY 11967, USA

Storage Buffer 50 mM Tris-HCl, 10 mM reduced Glutathione, pH=8.0 in the elution buffer.

GENE INFORMATION

Gene Name FLT4 fms-related tyrosine kinase 4 [Homo sapiens]

Official Symbol FLT4

Synonyms FLT4; fms-related tyrosine kinase 4; vascular endothelial growth factor receptor 3; PCL; VEGFR3; FLT-4; VEGFR-3; soluble VEGFR3 variant 1; soluble VEGFR3 variant 2; soluble VEGFR3 variant 3; fms-like tyrosine kinase 4; tyrosine-protein kinase receptor FLT4; FLT41; LMPH1A;

Gene ID 2324

mRNA Refseq NM_002020

Protein Refseq NP_002011

MIM 136352

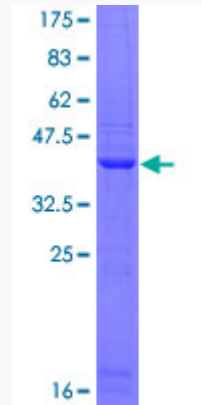
UniProt ID P35916

 Tel: 1-631-559-9269 1-516-512-3133

 Email: info@creative-biomart.com  Fax: 1-631-938-8127

 45-1 Ramsey Road, Shirley, NY 11967, USA

**Quality Control
Testing**



12.5% SDS-PAGE Stained with Coomassie Blue.

 Tel: 1-631-559-9269 1-516-512-3133

 Email: info@creative-biomart.com  Fax: 1-631-938-8127

 45-1 Ramsey Road, Shirley, NY 11967, USA