

Active Recombinant Human FLT4 protein, hFc-tagged

Cat. No. FLT4-889H Lot. No. (See product label)

SPECIFICATION

Product Overview	Active Recombinant Human FLT4 protein(P35916-1)(Tyr25-Ile776) is expressed from HEK293 with hFc (IgG1) tag at the C-Terminus.
Species	Human
Source	HEK293
ProteinLength	25-776 aa
Form	Lyophilized from 0.22µm filtered solution in 50mM Tris, 150mM NaCl, 100mM Glycine (pH 7.5).
Bio-activity	Immobilized Human VEGF-C, His Tag at 1µg/ml (100µl/well) on the plate. Dose response curve for Human VEGF R3, hFc Tag with the EC50 of 11.7ng/ml determined by ELISA.
Molecular Mass	The protein has a predicted MW of 111.3 kDa. Due to glycosylation, the protein migrates to 135-155 kDa based on Bis-Tris PAGE result.
Endotoxin	Less than 1 EU per ug by the LAL method.
Purity	> 95% as determined by Bis-Tris PAGE > 95% as determined by HPLC
Storage	-20 to -80°C for 12 months as supplied from date of receipt. -80°C for 3 months after reconstitution. Recommend to aliquot the protein into smaller quantities for optimal

 Tel: 1-631-559-9269 1-516-512-3133

 Email: info@creative-biomart.com  Fax: 1-631-938-8127

 45-1 Ramsey Road, Shirley, NY 11967, USA

storage. Please minimize freeze-thaw cycles.

Reconstitution Dissolve the lyophilized protein in distilled water.

GENE INFORMATION

Gene Name [FLT4 fms-related tyrosine kinase 4 \[Homo sapiens \]](#)

Official Symbol [FLT4](#)

Synonyms FLT4; fms-related tyrosine kinase 4; vascular endothelial growth factor receptor 3; PCL; VEGFR3; FLT-4; VEGFR-3; soluble VEGFR3 variant 1; soluble VEGFR3 variant 2; soluble VEGFR3 variant 3; fms-like tyrosine kinase 4; tyrosine-protein kinase receptor FLT4; FLT41; LMPH1A;

Gene ID [2324](#)

mRNA Refseq [NM_002020](#)

Protein Refseq [NP_002011](#)

MIM [136352](#)

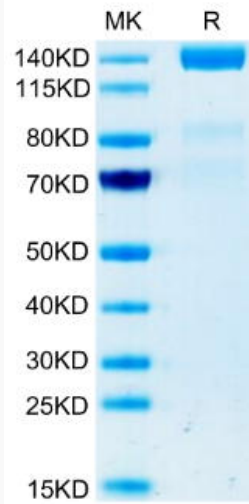
UniProt ID [P35916](#)

 Tel: 1-631-559-9269 1-516-512-3133

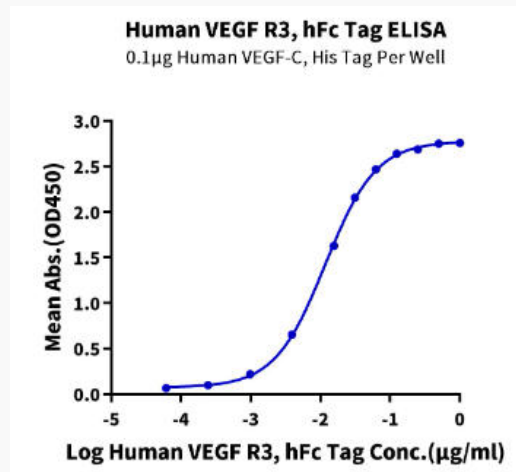
 Email: info@creative-biomart.com  Fax: 1-631-938-8127

 45-1 Ramsey Road, Shirley, NY 11967, USA

Bis-Tris PAGE



ELISA Data



 Tel: 1-631-559-9269 1-516-512-3133

 Email: info@creative-biomart.com  Fax: 1-631-938-8127

 45-1 Ramsey Road, Shirley, NY 11967, USA