

Recombinant Full Length Human FMNL1 Protein, C-Flag-tagged

Cat. No. FMNL1-1512HFL Lot. No. (See product label)

SPECIFICATION

Product Overview	Recombinant Full Length Human FMNL1 Protein, fused to Flag-tag at C-terminus, was expressed in Mammalian cells.
Species	Human
Source	Mammalian Cells
Description	This gene encodes a formin-related protein. Formin-related proteins have been implicated in morphogenesis, cytokinesis, and cell polarity. An alternative splice variant has been described but its full length sequence has not been determined.
Form	25 mM Tris HCl, pH 7.3, 100 mM glycine, 10% glycerol.
Molecular Mass	121.6 kDa
AA Sequence	<p>MGNAAGSAEQPAGPAAPPPKQPAPPKQPMPAAGELEERFNALNCMNLPPDKVQL LSQYDNEKKWELICD QERFQVKNPPAAYIQKLSYVDTGGVSRKVAADWMSNLGF KRRVQESTQVLRELETSRRTNHIGWVQEFLL NEENRGLDVLLEYLAFACSVTYDME STDNGASNSEKNKPLEQSVEDLSKGPPSSVPKSRHLTIKLTPAH SRKALRNSRIVSQ KDDVHVCIMCLRAIMNYQSGFSLVMNHPACVNEIALSLNKNPRTKALVLELLAAVC LVRGGHDIIAAFDNFKEVCGEQHRFEKLMFYFRNEDSNIDFMVACMQFINIVVHSVE NMNFRVFLQYEF THLGLDLYLERLRLTESDKLQVQIQAYLDNIFDVGALLEDTETKN AVLEHMEELQEQVALLTERLRDAEN ESMAKIAELEKQLSQARKELETLRERFSESTA MGASRRPPEPEKAPPAAPTRPSALELKVVEELEEKGLIR ILRGPDAVSIEILPVAVAT</p>

 Tel: 1-631-559-9269 1-516-512-3133

 Email: info@creative-biomart.com  Fax: 1-631-938-8127

 45-1 Ramsey Road, Shirley, NY 11967, USA



PSGGDAPTPGVPTGSPSPDLAPAAEPAPGAAPPPPPPLPGLPSPQEAPPS APPQA
PPLPGSPEPPPAPPLPGDLPPPPPPPPPPPGTDGPVPPPPPPPPPPGGPPDALGR
RDSELGPGV KAKKPIQTKFRMPLLNWVALKPSQITGTVFTELNDEKVLQELDMSDF
EEQFKTKSQGPSLDLSALKSKAA QKAPSKATLIEANRAKNLAILTRKGNLGAERICQA
IEAYDLQALGLDFLELLMRFLPTEYERSLITRFER EQRPMEEELSEEDRFMLCFSRIPR
LPERMTTLTFLGNFPDTAQLLMPQLNIIAASMSIKSSDKLRQILEI VLAFGNYMNSSK
RGAAYGFRLQSLDALLEMKSTDRKQTLHLYLVKVIKAEKYPQLTGFHSDLHFLDKAGS
V SLDSVLADVRSLQRGLELTQREFVRQDDCMVLKEFLRANSPTMDKLLADSKTAQE
AFESVVEYFGENPKT TSPGLFFSLFSRFIKAYKKAQEVEQWKKEAAAQEAGADTP
GKGEPAPKSPPKARRPQMDLISELKRRQ
QKEPLIYESDRDGAIEDIITVIKTVPFTARTGKRTSRLLEASLGEEMPLTRTRPLEQK
LISEEDLAANDILDYKDDDDKV

Purity	> 80% as determined by SDS-PAGE and Coomassie blue staining.
Stability	Stable for 12 months from the date of receipt of the product under proper storage and handling conditions. Avoid repeated freeze-thaw cycles.
Storage	Store at -80 centigrade.
Concentration	>50 ug/mL as determined by microplate BCA method.
Preparation	Recombinant protein was captured through anti-DDK affinity column followed by conventional chromatography steps.
Full Length	Full L.

GENE INFORMATION

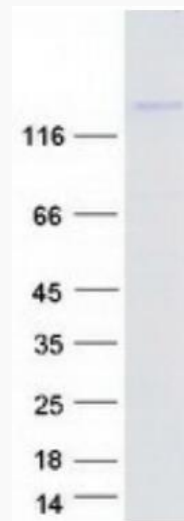
Gene Name	FMNL1 formin like 1 [Homo sapiens (human)]
------------------	--

Tel: 1-631-559-9269 1-516-512-3133

Email: info@creative-biomart.com Fax: 1-631-938-8127

45-1 Ramsey Road, Shirley, NY 11967, USA

Official Symbol	FMNL1
Synonyms	FMNL; FHOD4; KW-13; C17orf1; C17orf1B
Gene ID	752
mRNA Refseq	NM_005892.4
Protein Refseq	NP_005883.3
MIM	604656
UniProt ID	O95466



Coomassie blue staining of purified FMNL1 protein.

 Tel: 1-631-559-9269 1-516-512-3133

 Email: info@creative-biomart.com  Fax: 1-631-938-8127

 45-1 Ramsey Road, Shirley, NY 11967, USA