

## Recombinant Human FN1 protein, His-tagged

Cat. No. FN1-1374H Lot. No. (See product label)

### SPECIFICATION

<b>Product Overview</b>	Recombinant Human FN1 protein(P02751-1)(Gln32-Thr345), fused with C-terminal His tag, was expressed in HEK293.
<b>Species</b>	Human
<b>Source</b>	C-His
<b>ProteinLength</b>	Gln32-Thr345
<b>Tag</b>	C-His
<b>Form</b>	Supplied as 0.22µm filtered solution in PBS, 200mM L-Arginine (pH 7.4).
<b>Bio-activity</b>	
<b>Molecular Mass</b>	The protein has a predicted MW of 35.93 kDa. Due to glycosylation, the protein migrates to 40-55 kDa based on Tris-Bis PAGE result.
<b>Endotoxin</b>	Less than 1EU per µg by the LAL method.
<b>Purity</b>	> 95% as determined by Tris-Bis PAGE; > 95% as determined by HPLC.
<b>Storage</b>	Valid for 12 months from date of receipt when stored at -80°C.;Recommend to aliquot the protein into smaller quantities for optimal storage. Please do not repeated freeze-thaw cycles.

 Tel: 1-631-559-9269 1-516-512-3133

 Email: [info@creative-biomart.com](mailto:info@creative-biomart.com)  Fax: 1-631-938-8127

 45-1 Ramsey Road, Shirley, NY 11967, USA

**Reconstitution** It is recommended that sterile water be added to the vial to prepare a stock solution of 0.2 ug/ul. Centrifuge the vial at 4°C before opening to recover the entire contents.

## GENE INFORMATION

**Gene Name** FN1 fibronectin 1 [ Homo sapiens ]

**Official Symbol** FN1

**Synonyms** FN1; fibronectin 1; fibronectin; CIG; cold insoluble globulin; FINC; GFND2; LETS; migration stimulating factor; MSF; cold-insoluble globulin; migration-stimulating factor; FN; FNZ; ED-B; GFND; DKFZp686H0342; DKFZp686I1370; DKFZp686F10164; DKFZp686O13149;

**Gene ID** 2335

**mRNA Refseq** NM\_002026

**Protein Refseq** NP\_002017

**MIM** 135600

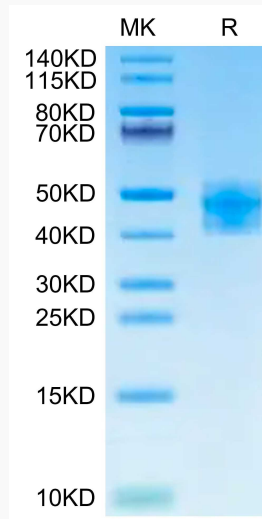
**UniProt ID** P02751

 Tel: 1-631-559-9269 1-516-512-3133

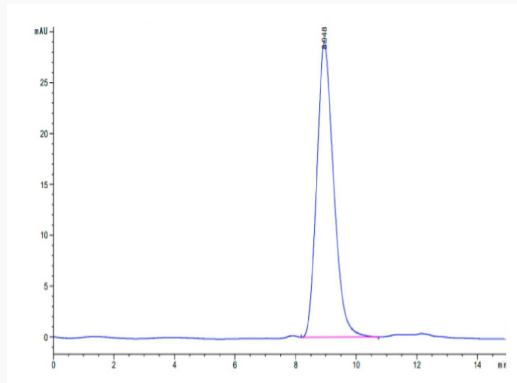
 Email: [info@creative-biomart.com](mailto:info@creative-biomart.com)  Fax: 1-631-938-8127

 45-1 Ramsey Road, Shirley, NY 11967, USA

**Tris-Bis PAGE**



**SEC-HPLC**



 Tel: 1-631-559-9269 1-516-512-3133

 Email: [info@creative-biomart.com](mailto:info@creative-biomart.com)  Fax: 1-631-938-8127

 45-1 Ramsey Road, Shirley, NY 11967, USA