

Recombinant Human FN1 Protein, GST-tagged

Cat. No. FN1-4400H **Lot. No.** (See product label)

SPECIFICATION

Product Overview	Human FN1 full-length ORF (AAH05858, 1 a.a. - 163 a.a.) recombinant protein with GST-tag at N-terminal.
Species	Human
Source	Wheat Germ
Description	<p>This gene encodes fibronectin, a glycoprotein present in a soluble dimeric form in plasma, and in a dimeric or multimeric form at the cell surface and in extracellular matrix. Fibronectin is involved in cell adhesion and migration processes including embryogenesis, wound healing, blood coagulation, host defense, and metastasis. The gene has three regions subject to alternative splicing, with the potential to produce 20 different transcript variants. However, the full-length nature of some variants has not been determined. [provided by RefSeq</p>
Molecular Mass	43.56 kDa
AA Sequence	<p>MSESGFKLLCQCLGFGSGHFRCDSRWCHDNGVNYKIGEKWDRQGENGQMMSC TCLGNGKGEFKCDPHEATCYDDGKTYHVGEQWQKEYLGAICSCTCFGGQRGWRC DNCRRPGGEPSPGTTGQSYNQYSQRYHQRTNTNVNCPICFMPLDVQADREDS RE</p>
Applications	<p>Enzyme-linked Immunoabsorbent Assay Western Blot (Recombinant protein) Antibody Production</p>

 Tel: 1-631-559-9269 1-516-512-3133

 Email: info@creative-biomart.com  Fax: 1-631-938-8127

 45-1 Ramsey Road, Shirley, NY 11967, USA

Protein Array

Notes	Best use within three months from the date of receipt of this protein.
Storage	Store at -80 centigrade. Aliquot to avoid repeated freezing and thawing.
Storage Buffer	50 mM Tris-HCl, 10 mM reduced Glutathione, pH=8.0 in the elution buffer.

GENE INFORMATION

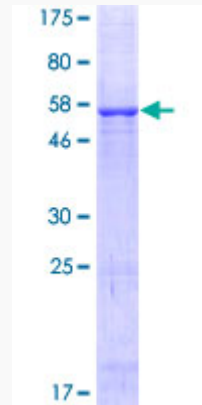
Gene Name	FN1 fibronectin 1 [Homo sapiens]
Official Symbol	FN1
Synonyms	FN1; fibronectin 1; fibronectin; CIG; cold insoluble globulin; FINC; GFND2; LETS; migration stimulating factor; MSF; cold-insoluble globulin; migration-stimulating factor; FN; FNZ; ED-B; GFND; DKFZp686H0342; DKFZp686I1370; DKFZp686F10164; DKFZp686O13149;
Gene ID	2335
mRNA Refseq	NM_002026
Protein Refseq	NP_002017
MIM	135600
UniProt ID	P02751

 Tel: 1-631-559-9269 1-516-512-3133

 Email: info@creative-biomart.com  Fax: 1-631-938-8127

 45-1 Ramsey Road, Shirley, NY 11967, USA

**Quality Control
Testing**



12.5% SDS-PAGE Stained with Coomassie Blue.

 Tel: 1-631-559-9269 1-516-512-3133

 Email: info@creative-biomart.com  Fax: 1-631-938-8127

 45-1 Ramsey Road, Shirley, NY 11967, USA