

Native Human Fibronectin 1

Cat. No. FN1-701H **Lot. No.** (See product label)

SPECIFICATION

Product Overview	Native Human FN1 was purified from human plasma.
Species	Human
Source	Human Plasma
Description	This gene encodes fibronectin, a glycoprotein present in a soluble dimeric form in plasma, and in a dimeric or multimeric form at the cell surface and in extracellular matrix. Fibronectin is involved in cell adhesion and migration processes including embryogenesis, wound healing, blood coagulation, host defense, and metastasis. The gene has three regions subject to alternative splicing, with the potential to produce 20 different transcript variants. However, the full-length nature of some variants has not been determined.
Molecular Mass	550 kDa
Formulation	Lyophilized from 20 mM Hepes, 150 mM NaCl, pH 7.4
Purity	>95% by SDS-PAGE
ActivityDetermination	N/A
Localization	plasma, 0.3 mg/ml; extracellular matrix
Mode of action	mediates cell attachment to extracellular matrix

 Tel: 1-631-559-9269 1-516-512-3133

 Email: info@creative-biomart.com  Fax: 1-631-938-8127

 45-1 Ramsey Road, Shirley, NY 11967, USA

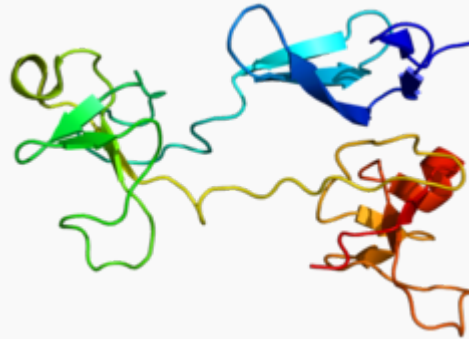
Structure	heterodimer
Storage	4oC
OfficialSymbol	FN1
GENE INFORMATION	
Gene Name	FN1 fibronectin 1 [Homo sapiens]
Synonyms	FN1; fibronectin 1; FN; CIG; FNZ; MSF; ED-B; FINC; GFND; LETS; GFND2; fibronectin; cold-insoluble globulin; migration-stimulating factor
Gene ID	2335
mRNA Refseq	NM_002026
Protein Refseq	NP_002017
MIM	135600
UniProt ID	P02751
Chromosome Location	2q34
Pathway	ECM-receptor interaction; Focal adhesion; Pathways in cancer; Regulation of actin cytoskeleton; Hemostasis; Integrin cell surface interactions; Signaling in Immune system
Function	collagen binding; extracellular matrix structural constituent; heparin binding

 Tel: 1-631-559-9269 1-516-512-3133

 Email: info@creative-biomart.com  Fax: 1-631-938-8127

 45-1 Ramsey Road, Shirley, NY 11967, USA

PDB rendering
based on 1e88.



 Tel: 1-631-559-9269 1-516-512-3133

 Email: info@creative-biomart.com  Fax: 1-631-938-8127

 45-1 Ramsey Road, Shirley, NY 11967, USA