

# Recombinant Full Length Human FOLH1 Protein, C-Flag-tagged

Cat. No. FOLH1-187HFL Lot. No. (See product label)

## SPECIFICATION

### Product Overview

Recombinant Full Length Human FOLH1 Protein, fused to Flag-tag at C-terminus, was expressed in Mammalian cells.

### Species

Human

### Source

Mammalian Cells

### Description

This gene encodes a type II transmembrane glycoprotein belonging to the M28 peptidase family. The protein acts as a glutamate carboxypeptidase on different alternative substrates, including the nutrient folate and the neuropeptide N-acetyl-L-aspartyl-L-glutamate and is expressed in a number of tissues such as prostate, central and peripheral nervous system and kidney. A mutation in this gene may be associated with impaired intestinal absorption of dietary folates, resulting in low blood folate levels and consequent hyperhomocysteinemia. Expression of this protein in the brain may be involved in a number of pathological conditions associated with glutamate excitotoxicity. In the prostate the protein is up-regulated in cancerous cells and is used as an effective diagnostic and prognostic indicator of prostate cancer. This gene likely arose from a duplication event of a nearby chromosomal region. Alternative splicing gives rise to multiple transcript variants encoding several different isoforms.

### Form

25 mM Tris HCl, pH 7.3, 100 mM glycine, 10% glycerol.

### Molecular Mass

84.2 kDa

 Tel: 1-631-559-9269 1-516-512-3133

 Email: [info@creative-biomart.com](mailto:info@creative-biomart.com)  Fax: 1-631-938-8127

 45-1 Ramsey Road, Shirley, NY 11967, USA

**AA Sequence**

MWNLLHETDSAVATARRPRWLCAGALVLAGGFFLLGFLFGWFIKSSNEATNITPKHN  
 MKAFLDELKAENI KKFLYNFTQIPHLAGTEQNFQLAKQIQSQWKEFGLDSVELAHYD  
 VLLSYPNKTHPNYISIINEDGNEIFN TSLFEP PPPGYENVSDIVPPFSAFSPQGMPEG  
 DLVYVNYARTEDFFKLERDMKINCSGKIVIARYGKVFR GNKVNAQLAGAKGVILYS  
 DPADYFAPGVKSYPDGWNLPGGGVQRGNILNLNGAGDPLTPGYPANEYAYR RGIA  
 EAVGLPSIPVHPIGYDAQKLEKMGG SAPPDSSWRGSLKVPYNVGP GFTGNFSTQ  
 KVKMHIHSTN EVTRIYNVIGTLRGAVEPDRYVILGGHRDSWVFGGIDPQSGAAVVHE  
 IVRSFGTLKKEGWRPRRILFAS WDAEEFLLGSTEWAEENSRLQLQERGVAYINAD  
 SSIEGNYTLRVDCTPLMYSLVHNLTKELKSPDEGFEG KSLYESWTKKSPSPEFSGM  
 PRISKLGS GNDFEVFFQRLGIASGRARYTKNWETNKFSGYPLYHSVYETYE LVEKF  
 YDPMFKYHLTVAQVRGGMV FELANSIVLPFDCRDYAVVLRKYADKIYSISMKHPQEM  
 KTYSVSFD SLFSAVKNFTEIASKFSERLQDFDKSNPIVLRMMNDQLMFLERAFIDPL  
 GLPDRPFYRHVIYAPSSH NKY  
 AGESFPGIYDALFDIESKVDPSKAWGEVKRQIYVA AFTVQAAAETLSEVATRTRPLE  
 QKLISEEDLAANDILDYKDDDDKV

**Purity**

> 80% as determined by SDS-PAGE and Coomassie blue staining.

**Stability**

Stable for 12 months from the date of receipt of the product under proper storage and handling conditions. Avoid repeated freeze-thaw cycles.

**Storage**

Store at -80 centigrade.

**Concentration**

>50 ug/mL as determined by microplate BCA method.

**Preparation**

Recombinant protein was captured through anti-DDK affinity column followed by conventional chromatography steps.

**Protein Families**

Druggable Genome, Protease, Transmembrane

 Tel: 1-631-559-9269 1-516-512-3133

 Email: [info@creative-biomart.com](mailto:info@creative-biomart.com)  Fax: 1-631-938-8127

 45-1 Ramsey Road, Shirley, NY 11967, USA

Full Length Full L.

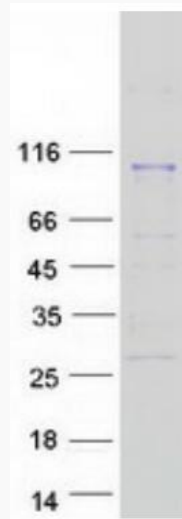
## GENE INFORMATION

Gene Name	FOLH1 folate hydrolase 1 [ Homo sapiens (human) ]
Official Symbol	FOLH1
Synonyms	PSM; FGCP; FOLH; GCP2; PSMA; mGCP; GCPII; NAALAD1
Gene ID	2346
mRNA Refseq	NM_004476.3
Protein Refseq	NP_004467.1
MIM	600934
UniProt ID	Q04609

 Tel: 1-631-559-9269 1-516-512-3133

 Email: [info@creative-biomart.com](mailto:info@creative-biomart.com)  Fax: 1-631-938-8127

 45-1 Ramsey Road, Shirley, NY 11967, USA



Coomassie blue staining of purified FOLH1 protein.

 Tel: 1-631-559-9269 1-516-512-3133

 Email: [info@creative-biomart.com](mailto:info@creative-biomart.com)  Fax: 1-631-938-8127

 45-1 Ramsey Road, Shirley, NY 11967, USA