

Recombinant Cynomolgus FOLH1 protein, His-tagged

Cat. No. FOLH1-2938C Lot. No. (See product label)

SPECIFICATION

Product Overview	Recombinant Cynomolgus FOLH1 protein(A0A2K5VNZ0)(Lys44-Ala750), fused with N-terminal His tag, was expressed in HEK293.
Species	Cynomolgus
Source	HEK293
ProteinLength	Lys44-Ala750
Tag	N-His
Form	Lyophilized from 0.22µm filtered solution in PBS (pH 7.4). Normally 5% trehalose is added as protectant before lyophilization.
Bio-activity	Immobilized Cynomolgus PSMA, His Tag at 2µg/ml (100µl/Well) on the plate. Dose response curve for Anti-PSMA Antibody, hFc Tag with the EC50 of 7.1ng/ml determined by ELISA.
Molecular Mass	The protein has a predicted MW of 80.6 kDa. Due to glycosylation, the protein migrates to 90-110 kDa based on Tris-Bis PAGE result.
Endotoxin	Less than 1EU per µg by the LAL method.
Purity	> 95% as determined by Tris-Bis PAGE; > 95% as determined by HPLC

 Tel: 1-631-559-9269 1-516-512-3133

 Email: info@creative-biomart.com  Fax: 1-631-938-8127

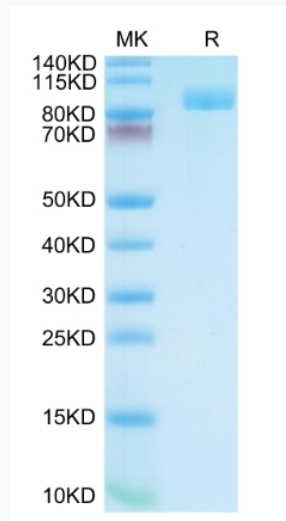
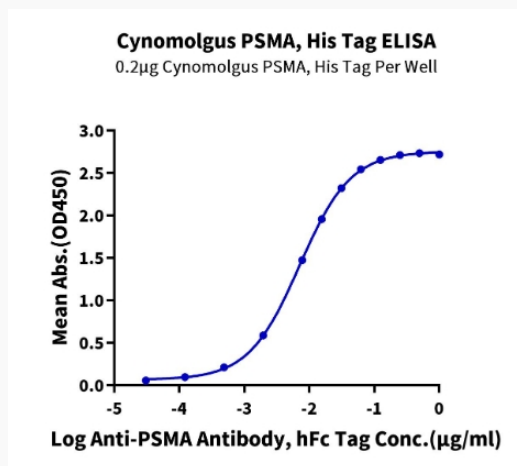
 45-1 Ramsey Road, Shirley, NY 11967, USA

Storage

Reconstituted protein stable at -80°C for 12 months, 4°C for 1 week. Use a manual defrost freezer and avoid repeated freeze-thaw cycles.

Reconstitution

Centrifuge tubes before opening. Reconstituting to a concentration more than 100 µg/ml is recommended. Dissolve the lyophilized protein in distilled water.

Tris-Bis PAGE

ELISA Data


Tel: 1-631-559-9269 1-516-512-3133

Email: info@creative-biomart.com Fax: 1-631-938-8127

45-1 Ramsey Road, Shirley, NY 11967, USA