

Recombinant Pig FOLH1 protein, MBP&His-Avi-tagged, Biotinylated

Cat. No. FOLH1-3433P Lot. No. (See product label)

SPECIFICATION

Product Overview	Biotinylated Recombinant Pig FOLH1 protein(O77564)(44-751aa), fused with N-terminal MBP tag and C-terminal His and Avi tag, was expressed in E.coli.
Species	Pig
Source	E.coli
ProteinLength	44-751aa
Conjugation/Label	Biotin
Form	If the delivery form is liquid, the default storage buffer is Tris/PBS-based buffer, 5%-50% glycerol. If the delivery form is lyophilized powder, the buffer before lyophilization is Tris/PBS-based buffer, 6% Trehalose, pH 8.0.
Molecular Mass	128.0 kDa
Purity	Greater than 85% as determined by SDS-PAGE.
Storage	Store at -20°C/-80°C upon receipt, aliquoting is necessary for mutiple use. Avoid repeated freeze-thaw cycles.
Reconstitution	We recommend that this vial be briefly centrifuged prior to opening to bring the contents to the bottom. Please reconstitute protein in deionized sterile water to a

 Tel: 1-631-559-9269 1-516-512-3133

 Email: info@creative-biomart.com  Fax: 1-631-938-8127

 45-1 Ramsey Road, Shirley, NY 11967, USA

concentration of 0.1-1.0 mg/mL. We recommend to add 5-50% of glycerol (final concentration) and aliquot for long-term storage at -20°C/-80°C.

AA Sequence

KSPNEAANIS PQHNVKKAFLDELKAENIKTFLYNFTRIPHLAGTEQNFQLAKQIQSQW
 KEFGLDSVELAHYDVLLSYPNKTRPNYISIIDEDGNEIFNTSLFEP PPPGYENVSDVVP
 PFSAFSPQGMPEGDLVYVNYARTEDFFKLERDMKINCSGKILIARYGKIFRGNKVKN
 AQLAGAKGILYSDPADYFAPGVQSYPDGWNLPGGGVQ RGNILNLNGAGDPLTPGY
 PANEYAYRLQIAEAVGLPRIPVHPIGYSDAQKLEKMGG SAPPDDSWKGLHVPYNV
 GPGFTGNFSTQKVKMHIHSDNKVKRIYNVIGTLRGAVEPDRYVILGGHRDSWVFGGI
 DPQSGAAVVHEIVRSFGKLLKEGWRPRRTVLFASWDAEEYGLFGSTEWAEENSRIL
 QERGVAYINADSSIEGNYTLRVDCTPLMYSLVYNLTKE LQSPDEGFEGKSLFESWNE
 KSPSPEFSGLP RISKLGSGNDFEVFFQRLGIASGRARYTKDWVTNK FSSYPLYHSVY
 ETYELVEKFYDPTFKYHLAVAQVRGGIVFELANSVVRPFDCRDYAVVLRNYADKLYN
 ISMNHPQEMKAYSVSFDSLFSAVKNFTEIASNFSERVQDL DKNNPILLRIMNDQLMFL
 ERAFIVPLGLPDRAFYRHVIYAPSSH NKYMGESFPGIYDALFDIENKVDP SKAWGEV
 KRQISIAAFTVQAAAGTLREVA

Conjugation

Biotin

GENE INFORMATION

Gene Name

FOLH1 folate hydrolase (prostate-specific membrane antigen) 1 [*Sus scrofa*]

Official Symbol

FOLH1

Synonyms

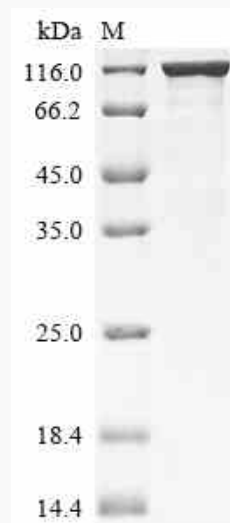
FOLH1; folate hydrolase (prostate-specific membrane antigen) 1; glutamate carboxypeptidase 2; FGCP; mGCP; GCPII; NAALADase I; folate hydrolase 1; glutamate carboxypeptidase II; membrane glutamate carboxypeptidase; folylpoly-gamma-glutamate carboxypeptidase; prostate-specific membrane antigen homolog; pteroylpoly-gamma-glutamate carboxypeptidase; N-acetylated-alpha-linked acidic

 Tel: 1-631-559-9269 1-516-512-3133

 Email: info@creative-biomart.com  Fax: 1-631-938-8127

 45-1 Ramsey Road, Shirley, NY 11967, USA

dipeptidase I;

Gene ID 397677**mRNA Refseq** NM_214384**Protein Refseq** NP_999549**SDS-PAGE** Tel: 1-631-559-9269 1-516-512-3133 Email: info@creative-biomart.com  Fax: 1-631-938-8127 45-1 Ramsey Road, Shirley, NY 11967, USA