

Recombinant Human FOLH1 Protein, GST-tagged

Cat. No. FOLH1-4417H Lot. No. (See product label)

SPECIFICATION

Product Overview	Human FOLH1 full-length ORF (NP_001014986.1, 1 a.a. - 719 a.a.) recombinant protein with GST-tag at N-terminal.
Species	Human
Source	Wheat Germ
Description	<p>This gene encodes a type II transmembrane glycoprotein belonging to the M28 peptidase family. The protein acts as a glutamate carboxypeptidase on different alternative substrates, including the nutrient folate and the neuropeptide N-acetyl-L-aspartyl-L-glutamate and is expressed in a number of tissues such as prostate, central and peripheral nervous system and kidney. A mutation in this gene may be associated with impaired intestinal absorption of dietary folates, resulting in low blood folate levels and consequent hyperhomocysteinemia. Expression of this protein in the brain may be involved in a number of pathological conditions associated with glutamate excitotoxicity. In the prostate the protein is up-regulated in cancerous cells and is used as an effective diagnostic and prognostic indicator of prostate cancer. This gene likely arose from a duplication event of a nearby chromosomal region. Alternative splicing gives rise to multiple transcript variants. [provided by RefSeq]</p>
Molecular Mass	107 kDa
AA Sequence	MWNLLHETDSAVATARPRWLCAGALVLAGGFFLLGFLFGWFIKSSNEATNITPKHN MKAFLDELKAENIKKFLYNFTQIPHLAGTEQNFQLAKQIQSQWKEFGLDSVELAHYD

 Tel: 1-631-559-9269 1-516-512-3133

 Email: info@creative-biomart.com  Fax: 1-631-938-8127

 45-1 Ramsey Road, Shirley, NY 11967, USA

VLLSYPNKTHPNYISIINEDGNEIFNTSLFEP PPPGYENVSDIVPPFSAFSPQGMPEGD
 LVYVNYARTEDFFKLERDMKINCSGKIVARIYGVFRGNKVNAQLAGAKGVILYSDP
 ADYFAPGVKSYPDGWNLPGGGVQRGNILNLNGAGDPLTPGYPANEYAYRRGIAEA
 VGLPSIPVHPIGYYDAQKLEKMGGSAPPDSSWRGSLKVYPNVGPGFTGNFSTQKV
 KMHIHSTNEVTRIYNVIGTLRGAVEPDRYVILGGHRDSWVFGGIDPQSGAAVVHEIVR
 SFGTLKKEGWRRRTILFASWDAEEFGLLGSTEWAEENSRLQERGVAYINADSSIE
 GNYTLRV DCTPLMYSLVHNLTKELKSPDEGFEGKSLYESWTKKSPSPEFSGMPRIS
 KLGSNDFEVFFQRLGIASGRARYTKNWETNKFSGYPLYHSVYETYELVEKFYDPM
 FKYHLTVAQVRGGMV FELANSIVLPFDCRDYAVVLRKYADKIYSISMKHPQEMKTYS
 VSFDSLFSVKNFTEIASKFSERLQDFDKSKHVIIYAPSSH NKYAGESFPGIYDALFDIE
 SKVDPSKAWGEV KRQIYVAAFTVQAAAETLSEVA

Applications

Enzyme-linked Immunoabsorbent Assay
 Western Blot (Recombinant protein)
 Antibody Production
 Protein Array

Notes

Best use within three months from the date of receipt of this protein.

Storage

Store at -80 centigrade. Aliquot to avoid repeated freezing and thawing.

Storage Buffer

50 mM Tris-HCl, 10 mM reduced Glutathione, pH=8.0 in the elution buffer.

GENE INFORMATION

Gene Name

FOLH1 folate hydrolase (prostate-specific membrane antigen) 1 [Homo sapiens]

Official Symbol

FOLH1

Synonyms

FOLH1; folate hydrolase (prostate-specific membrane antigen) 1; FOLH; glutamate carboxypeptidase 2; GCP2; GCP2II; glutamate carboxylase II; glutamate

 Tel: 1-631-559-9269 1-516-512-3133

 Email: info@creative-biomart.com  Fax: 1-631-938-8127

 45-1 Ramsey Road, Shirley, NY 11967, USA

carboxypeptidase II; NAALAD1; NAALAdase; PSM; PSMA; NAALADase I; membrane glutamate carboxypeptidase; cell growth-inhibiting gene 27 protein; folypoly-gamma-glutamate carboxypeptidase; prostate specific membrane antigen variant F; pteroylpoly-gamma-glutamate carboxypeptidase; N-acetylated alpha-linked acidic dipeptidase 1; N-acetylated-alpha-linked acidic dipeptidase I; FGCP; mGCP;

Gene ID [2346](#)

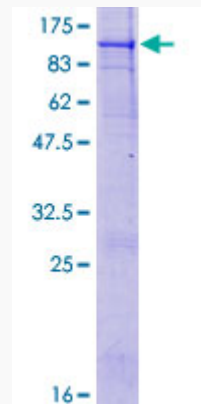
mRNA Refseq [NM_001014986](#)

Protein Refseq [NP_001014986](#)


MIM [600934](#)

UniProt ID [Q04609](#)

Quality Control Testing



12.5% SDS-PAGE Stained with Coomassie Blue.

 Tel: 1-631-559-9269 1-516-512-3133

 Email: info@creative-biomart.com  Fax: 1-631-938-8127

 45-1 Ramsey Road, Shirley, NY 11967, USA