

Recombinant Human FOLH1 protein, His-tagged

Cat. No. FOLH1-5274H Lot. No. (See product label)

SPECIFICATION

Product Overview	Recombinant Human FOLH1 protein(Q04609)(48-750aa), fused to N-terminal His tag, was expressed in E. coli.
Species	Human
Source	E.coli
ProteinLength	48-750aa
Form	If the delivery form is liquid, the default storage buffer is Tris/PBS-based buffer, 5%-50% glycerol. If the delivery form is lyophilized powder, the buffer before lyophilization is Tris/PBS-based buffer, 6% Trehalose, pH 8.0.
Molecular Mass	83.1 kDa
Purity	Greater than 90% as determined by SDS-PAGE.
Storage	Store at -20°C/-80°C upon receipt, aliquoting is necessary for mutiple use. Avoid repeated freeze-thaw cycles.
Reconstitution	Please reconstitute protein in deionized sterile water to a concentration of 0.1-1.0 mg/mL. We recommend to add 5-50% of glycerol (final concentration) and aliquot for long-term storage at -20°C/-80°C. Our default final concentration of glycerol is 50%.

 Tel: 1-631-559-9269 1-516-512-3133

 Email: info@creative-biomart.com  Fax: 1-631-938-8127

 45-1 Ramsey Road, Shirley, NY 11967, USA

GENE INFORMATION

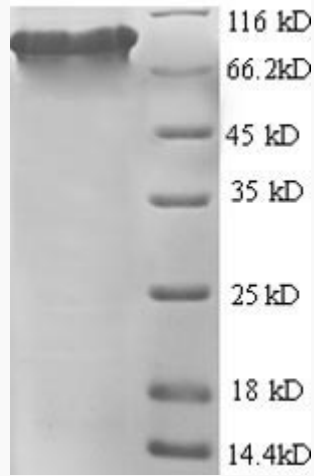
Gene Name	FOLH1 folate hydrolase (prostate-specific membrane antigen) 1 [Homo sapiens]
Official Symbol	FOLH1
Synonyms	FOLH1; folate hydrolase (prostate-specific membrane antigen) 1; FOLH; glutamate carboxypeptidase 2; GCP2; GCPII; glutamate carboxylase II; glutamate carboxypeptidase II; NAALAD1; NAALAdase; PSM; PSMA; NAALADase I; membrane glutamate carboxypeptidase; cell growth-inhibiting gene 27 protein; folylpoly-gamma-glutamate carboxypeptidase; prostate specific membrane antigen variant F; pteroylpoly-gamma-glutamate carboxypeptidase; N-acetylated alpha-linked acidic dipeptidase 1; N-acetylated-alpha-linked acidic dipeptidase I; FGCP; mGCP;
Gene ID	2346
mRNA Refseq	NM_001014986
Protein Refseq	NP_001014986
MIM	600934
UniProt ID	Q04609

 Tel: 1-631-559-9269 1-516-512-3133

 Email: info@creative-biomart.com  Fax: 1-631-938-8127

 45-1 Ramsey Road, Shirley, NY 11967, USA

SDS-PAGE



 Tel: 1-631-559-9269 1-516-512-3133

 Email: info@creative-biomart.com  Fax: 1-631-938-8127

 45-1 Ramsey Road, Shirley, NY 11967, USA