

## Recombinant Human FOLH1 protein, hFc-tagged

Cat. No. FOLH1-6477H Lot. No. (See product label)

### SPECIFICATION

<b>Product Overview</b>	Recombinant Human FOLH1 protein(Q04609-1)(Lys44-Ala750), fused with N-terminal hFc tag, was expressed in HEK293.
<b>Species</b>	Human
<b>Source</b>	HEK293
<b>ProteinLength</b>	Lys44-Ala750
<b>Tag</b>	N-hFc
<b>Form</b>	Lyophilized from 0.22µm filtered solution in PBS (pH 7.4). Normally 8% trehalose is added as protectant before lyophilization.
<b>Bio-activity</b>	Immobilized Human PSMA, hFc Tag at 2ug/ml (100ul/Well) on the plate. Dose response curve for Biotinylated Anti-PSMA Antibody, hFc Tag with the EC50 of 16.3ng/ml determined by ELISA.
<b>Molecular Mass</b>	The protein has a predicted MW of 106.8 kDa. Due to glycosylation, the protein migrates to 110-120 kDa based on Tris-Bis PAGE result.
<b>Endotoxin</b>	Less than 1EU per µg by the LAL method.
<b>Purity</b>	> 95% as determined by Tris-Bis PAGE;> 95% as determined by HPLC

 Tel: 1-631-559-9269 1-516-512-3133

 Email: [info@creative-biomart.com](mailto:info@creative-biomart.com)  Fax: 1-631-938-8127

 45-1 Ramsey Road, Shirley, NY 11967, USA

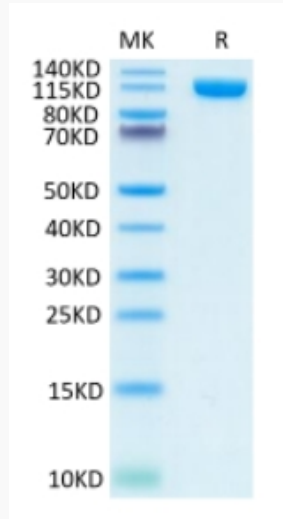
<b>Storage</b>	Reconstituted protein stable at -80°C for 12 months, 4°C for 1 week. Use a manual defrost freezer and avoid repeated freeze-thaw cycles.
<b>Reconstitution</b>	Centrifuge tubes before opening. Reconstituting to a concentration more than 100 µg/ml is recommended. Dissolve the lyophilized protein in distilled water.
<b>GENE INFORMATION</b>	
<b>Gene Name</b>	<a href="#">FOLH1 folate hydrolase (prostate-specific membrane antigen) 1 [ Homo sapiens ]</a>
<b>Official Symbol</b>	<a href="#">FOLH1</a>
<b>Synonyms</b>	FOLH1; folate hydrolase (prostate-specific membrane antigen) 1; FOLH; glutamate carboxypeptidase 2; GCP2; GCP2; GCP2; glutamate carboxylase II; glutamate carboxypeptidase II; NAALAD1; NAALADase; PSM; PSMA; NAALADase I; membrane glutamate carboxypeptidase; cell growth-inhibiting gene 27 protein; folylpoly-gamma-glutamate carboxypeptidase; prostate specific membrane antigen variant F; pteroylpoly-gamma-glutamate carboxypeptidase; N-acetylated alpha-linked acidic dipeptidase 1; N-acetylated-alpha-linked acidic dipeptidase I; FGCP; mGCP;
<b>Gene ID</b>	<a href="#">2346</a>
<b>mRNA Refseq</b>	<a href="#">NM_001014986</a>
<b>Protein Refseq</b>	<a href="#">NP_001014986</a>
<b>MIM</b>	<a href="#">600934</a>
<b>UniProt ID</b>	<a href="#">Q04609</a>

 Tel: 1-631-559-9269 1-516-512-3133

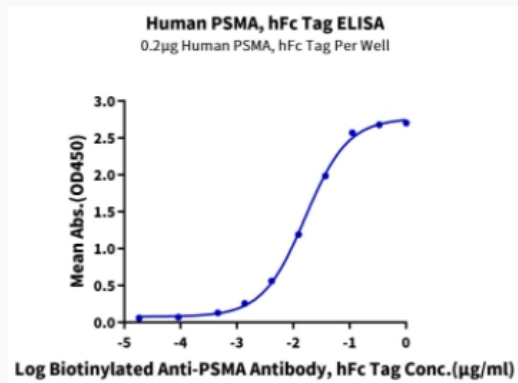
 Email: [info@creative-biomart.com](mailto:info@creative-biomart.com)  Fax: 1-631-938-8127

 45-1 Ramsey Road, Shirley, NY 11967, USA

**Tris-Bis PAGE**



**ELISA Data**



Tel: 1-631-559-9269 1-516-512-3133

Email: [info@creative-biomart.com](mailto:info@creative-biomart.com) Fax: 1-631-938-8127

45-1 Ramsey Road, Shirley, NY 11967, USA