

Recombinant Human FOLH1 protein, His-tagged

Cat. No. FOLH1-744H Lot. No. (See product label)

SPECIFICATION

Product Overview	Recombinant Human FOLH1 protein(NP_001014986)(45-385 aa), fused to His tag, was expressed in E. coli.
Species	Human
Source	E.coli
ProteinLength	45-385 aa
Form	The purified protein was Lyophilized from sterile PBS (58mM Na ₂ HPO ₄ , 17mM NaH ₂ PO ₄ , 68mM NaCl, pH7.). 5 % trehalose and 5 % mannitol are added as protectants before lyophilization.
AA Sequence	SSNEATNITPKHNMKAFLDELKAENIKKFLYNFTQIPHLAGTEQNFQLAKQIQSQWKE FGLDSVELAHYDVLLSYPNKTHPNYISIINEDGNEIFNTSLFEP PPPGYENVSDIVPPF SAFSPQGMPEGDLVYVNYARTEDFFKLERDMKINCSGKIVIARYGKVFRGNKVKNA QLAGAKGVILYSDPADYFAPGVKSYPDGWNLPGGGVQRGNILNLNGAGDPLTPGY ANEYAYRRGIAEAVGLPSIPVHPIGYDDAQKLEKMGGSAPPDSSWRGSLKVPYNV GPGFTGNFSTQVKMHIHSTNEVTRIYNVIGTLRGAVEPDRYVILGGHRDSWVFGG
Purity	90%, by SDS-PAGE with Coomassie Brilliant Blue staining.
Storage	Short-term storage: Store at 2-8°C for (1-2 weeks). Long-term storage: Aliquot and store at -20°C to -80°C for up to 3 months, buffer containing 50% glycerol is recommended for reconstitution. Avoid repeat freeze-thaw

 Tel: 1-631-559-9269 1-516-512-3133

 Email: info@creative-biomart.com  Fax: 1-631-938-8127

 45-1 Ramsey Road, Shirley, NY 11967, USA

cycles.

Reconstitution

Reconstitute at 0.25 g/μl in 200 μl sterile water for short-term storage.
 Reconstitution with 200 μl 50% glycerol solution is recommended for longer term storage (see Stability and Storage for more details).
 If a different concentration is needed for your purposes please adjust the reconstitution volume as required (please note: the ion concentration of the final solution will vary according to the volume used).
 Note: Centrifuge vial before opening. When reconstituting, gently pipet and wash down the sides of the vial to ensure full recovery of the protein into solution.

GENE INFORMATION

Gene Name

FOLH1 folate hydrolase (prostate-specific membrane antigen) 1 [Homo sapiens]

Official Symbol

FOLH1

Synonyms

FOLH1; folate hydrolase (prostate-specific membrane antigen) 1; FOLH; glutamate carboxypeptidase 2; GCP2; GCP2; GCP2; glutamate carboxylase II; glutamate carboxypeptidase II; NAALAD1; NAALADase; PSM; PSMA; NAALADase I; membrane glutamate carboxypeptidase; cell growth-inhibiting gene 27 protein; folypoly-gamma-glutamate carboxypeptidase; prostate specific membrane antigen variant F; pteroylpoly-gamma-glutamate carboxypeptidase; N-acetylated alpha-linked acidic dipeptidase 1; N-acetylated-alpha-linked acidic dipeptidase I; FGCP; mGCP;

Gene ID

2346

mRNA Refseq

NM_001014986

Protein Refseq

NP_001014986

 Tel: 1-631-559-9269 1-516-512-3133

 Email: info@creative-biomart.com  Fax: 1-631-938-8127

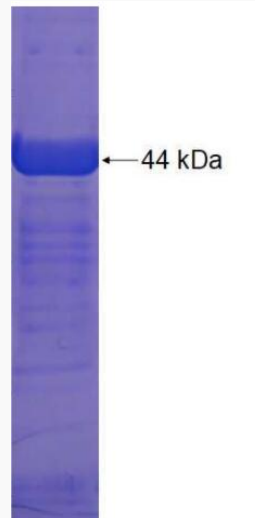
 45-1 Ramsey Road, Shirley, NY 11967, USA



MIM 600934

UniProt ID Q04609

SDS-PAGE



Tel: 1-631-559-9269 1-516-512-3133

Email: info@creative-biomart.com Fax: 1-631-938-8127

45-1 Ramsey Road, Shirley, NY 11967, USA