

Recombinant Cynomolgus/Rhesus macaque FOLR1 protein, His-tagged

Cat. No. FOLR1-315C Lot. No. (See product label)

SPECIFICATION

Product Overview	Recombinant Cynomolgus/Rhesus macaque FOLR1 protein(NP_001181576.1)(Arg25-Met233), fused with C-terminal His tag, was expressed in HEK293.
Species	Cynomolgus/Rhesus macaque
Source	HEK293
ProteinLength	Arg25-Met233
Tag	C-His
Form	Lyophilized from 0.22µm filtered solution in PBS (pH 7.4). Normally 8% trehalose is added as protectant before lyophilization.
Bio-activity	Immobilized Cynomolgus/Rhesus macaque FOLR1, His Tag at 1ug/ml (100ul/well) on the plate. Dose response curve for Anti-FOLR1 Antibody, hFc Tag with the EC50 of 3.3ng/ml determined by ELISA.
Molecular Mass	The protein has a predicted MW of 25.6 kDa. Due to glycosylation, the protein migrates to 35-45 kDa based on Tris-Bis PAGE result.
Endotoxin	Less than 1EU per µg by the LAL method.

 Tel: 1-631-559-9269 1-516-512-3133

 Email: info@creative-biomart.com  Fax: 1-631-938-8127

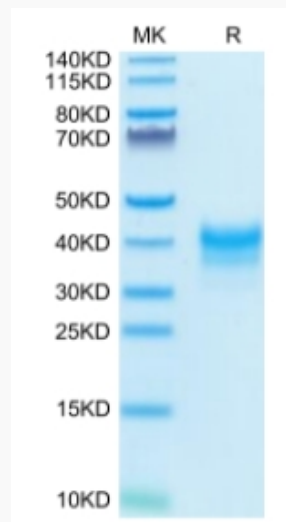
 45-1 Ramsey Road, Shirley, NY 11967, USA

Purity > 95% as determined by Tris-Bis PAGE;> 95% as determined by HPLC

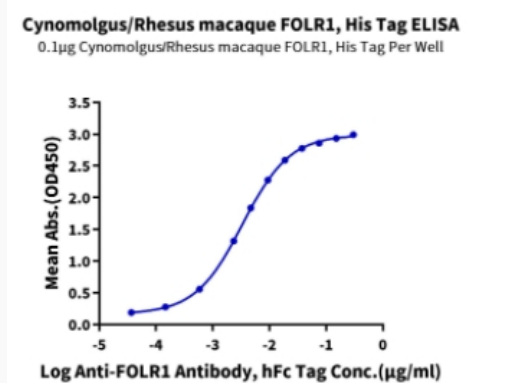
Storage Reconstituted protein stable at -80°C for 12 months, 4°C for 1 week. Use a manual defrost freezer and avoid repeated freeze-thaw cycles.

Reconstitution Centrifuge tubes before opening. Reconstituting to a concentration more than 100 µg/ml is recommended. Dissolve the lyophilized protein in distilled water.

Tris-Bis PAGE



ELISA Data



Tel: 1-631-559-9269 1-516-512-3133

Email: info@creative-biomart.com Fax: 1-631-938-8127

45-1 Ramsey Road, Shirley, NY 11967, USA