

Active Recombinant Mouse FOLR1 Protein, His & Avi-tagged, Biotinylated

Cat. No. FOLR1-317M **Lot. No.** (See product label)

SPECIFICATION

Product Overview	Recombinant Mouse FOLR1 Protein, His & Avi-tagged, Biotinylated is expressed from human 293 cells (HEK293). It contains AA Thr 25 - Ser 232 (Accession # P35846-1). Predicted N-terminus: Thr 25. This protein carries a polyhistidine tag at the C-terminus, followed by an Avi tag. The protein has a calculated MW of 26.9 kDa. The protein migrates as 36 kDa and 44 kDa under reducing (R) condition (SDS-PAGE) due to glycosylation. The biotin to protein ratio is 0.5-1 as determined by the HABA assay.
Species	Mouse
Source	HEK293
ProteinLength	Thr 25 - Ser 232
Form	Lyophilized from 0.22 µm filtered solution in PBS, pH7.4. Normally trehalose is added as protectant before lyophilization.
Bio-activity	Immobilized Folic acid-BSA at 5 µg/mL (100 µL/well) can bind Recombinant Mouse FOLR1 Protein, His & Avi-tagged, Biotinylated with a linear range of 0.008-0.222 µg/mL (QC tested).
Molecular Mass	26.9 kDa
Endotoxin	Less than 1.0 EU per

 Tel: 1-631-559-9269 1-516-512-3133

 Email: info@creative-biomart.com  Fax: 1-631-938-8127

 45-1 Ramsey Road, Shirley, NY 11967, USA

	µg by the LAL method.
Purity	>95% as determined by SDS-PAGE.
Notes	Please avoid repeated freeze-thaw cycles.
Stability	No activity loss is observed after storage at: 4-8 centigrade for 12 months in lyophilized state; -70 centigrade for 3 months under sterile conditions after reconstitution.
Storage	For long term storage, the product should be stored at lyophilized state at -20 centigrade or lower.
Reconstitution	It is recommended that sterile water be added to the vial to prepare a stock solution of 0.2 mg/ml. Centrifuge the vial at 4 centigrade before opening to recover the entire contents.
Conjugation	Biotin

GENE INFORMATION

Gene Name	Folr1 folate receptor 1 (adult) [<i>Mus musculus</i>]
Official Symbol	FOLR1
Synonyms	FOLR1; folate receptor alpha; FR-alpha; folate binding protein 1; FBP1; Folbp1; Folbp-1;
Gene ID	14275
mRNA Refseq	NM_001252552

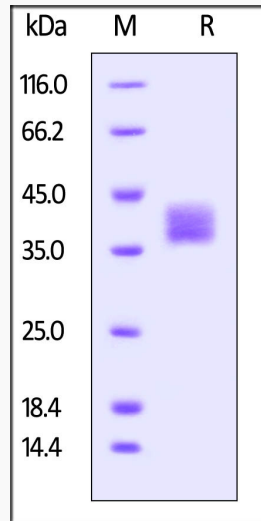
 Tel: 1-631-559-9269 1-516-512-3133

 Email: info@creative-biomart.com  Fax: 1-631-938-8127

 45-1 Ramsey Road, Shirley, NY 11967, USA

Protein Refseq

NP_001239481



 Tel: 1-631-559-9269 1-516-512-3133

 Email: info@creative-biomart.com  Fax: 1-631-938-8127

 45-1 Ramsey Road, Shirley, NY 11967, USA