

## Recombinant Human FOLR1 protein, His-Avi-tagged

Cat. No. FOLR1-6744H Lot. No. (See product label)

### SPECIFICATION

|                         |   |
|-------------------------|---|
| <b>Product Overview</b> | Recombinant Human FOLR1 protein(P15328)(Arg25-Met233), fused with C-terminal His and Avi tag, was expressed in HEK293.  |
| <b>Species</b>          | Human   |
| <b>Source</b>           | HEK293  |
| <b>ProteinLength</b>    | Arg25-Met233  |
| <b>Tag</b>              | C-His-Avi   |
| <b>Form</b>             | Lyophilized from 0.22µm filtered solution in PBS (pH 7.4). Normally 5% trehalose is added as protectant before lyophilization.  |
| <b>Bio-activity</b>     | Immobilized Human FOLR1, His Tag at 1 µg/ml (100 µl/Well) on plate.Dose response curve for Anti-FOLR1 Antibody, hFc Tag with the EC50 of 4.6 ng/ml determined by ELISA. |
| <b>Molecular Mass</b>   | The protein has a predicted MW of 27.5 kDa. Due to glycosylation, the protein migrates to 38-45 kDa based on Tris-Bis PAGE result.                                      |
| <b>Endotoxin</b>        | Less than 1EU per µg by the LAL method.   |
| <b>Purity</b>           | > 95% as determined by Tris-Bis PAGE; > 95% as determined by HPLC   |

 Tel: 1-631-559-9269 1-516-512-3133

 Email: [info@creative-biomart.com](mailto:info@creative-biomart.com)  Fax: 1-631-938-8127

 45-1 Ramsey Road, Shirley, NY 11967, USA

**Storage** Reconstituted protein stable at -80°C for 12 months, 4°C for 1 week. Use a manual defrost freezer and avoid repeated freeze-thaw cycles.

**Reconstitution** Centrifuge tubes before opening. Reconstituting to a concentration more than 100 µg/ml is recommended. Dissolve the lyophilized protein in distilled water.

## GENE INFORMATION

**Gene Name** FOLR1 folate receptor 1 (adult) [ Homo sapiens ]

**Official Symbol** FOLR1

**Synonyms** FOLR1; folate receptor 1 (adult); FOLR; folate receptor alpha; FR-alpha; KB cells FBP; folate binding protein; folate receptor, adult; adult folate-binding protein; ovarian tumor-associated antigen MOv18; FBP;

**Gene ID** 2348

**mRNA Refseq** NM\_000802

**Protein Refseq** NP\_000793

**MIM** 136430

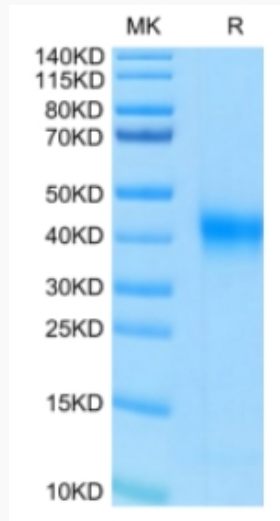
**UniProt ID** P15328

 Tel: 1-631-559-9269 1-516-512-3133

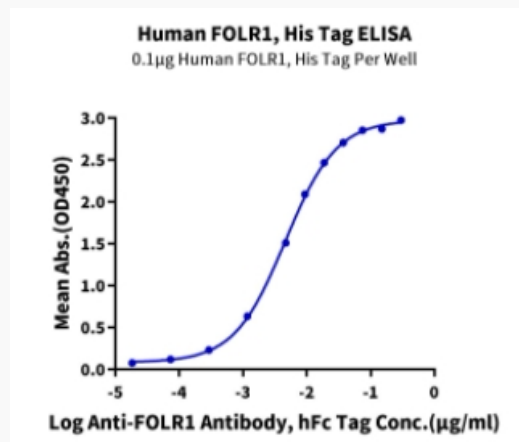
 Email: [info@creative-biomart.com](mailto:info@creative-biomart.com)  Fax: 1-631-938-8127

 45-1 Ramsey Road, Shirley, NY 11967, USA

**Tris-Bis PAGE**



**ELISA Data**



 Tel: 1-631-559-9269 1-516-512-3133

 Email: [info@creative-biomart.com](mailto:info@creative-biomart.com)  Fax: 1-631-938-8127

 45-1 Ramsey Road, Shirley, NY 11967, USA