

## Recombinant Human FOSL1, GST-tagged

Cat. No. FOSL1-12965H Lot. No. (See product label)

### SPECIFICATION

<b>Product Overview</b>	Recombinant Human FOSL1(1-271 aa), fused with N-terminal GST tag, was expressed in E.coli.
<b>Species</b>	Human
<b>Source</b>	E.coli
<b>ProteinLength</b>	1-271 aa
<b>Form</b>	Lyophilized from PBS, pH 7.0, 0.1% SKL, 1% Triton X-100, 5% Trehalose, 5% Mannitol.
<b>Molecular Mass</b>	The protein has a calculated MW of 56 kDa.
<b>AASequence</b>	MSPILGYWKIKGLVQPTRLLEYLEEKYEEHLYERDEGDKWRNKKFELGLEFPNLPY YIDGDVKLTQSMAIIRYIADKHNMLGGCPKERAEISMLEGAVLDIRYGVSR IAYSKD FE TLKVDFLSKLPEMLKMFEDRLCHKTYLNGDHVTHPDFMLYDALDVVLYMDPMCLDA FPKLVCFKKRIEAIPQIDKYLKSSKYIAWPLQG WQATFGGGDHPPKSDLVPRGSMFR DFGEPGPSSGNGGGYGGPAQPPAAAQAAQK FHLVPSINTMSGSQELQWMVQPH FLGPSSYPRPLTYPQYSPPQPRPGVIRALGPPP GVRRRPCEQISPEEEERRRVRRE RNKLAAAKCRNRRKELTDFLQAETDKLEDEK SGLQREIEELQKQKERLELVLEAHRP ICKIPEGAKEGDTGSTSGTSSPPAPCRPVPC ISLSPGPVLEPEALHTPTLMTTPSLTP FTP SLVFTYPSTPEPCASAHRKSSSSSSGDPSSDPLGSPTLLAL
<b>Endotoxin</b>	<1.0EU per 1g (determined by the LAL method).

 Tel: 1-631-559-9269 1-516-512-3133

 Email: [info@creative-biomart.com](mailto:info@creative-biomart.com)  Fax: 1-631-938-8127

 45-1 Ramsey Road, Shirley, NY 11967, USA

<b>Purity</b>	> 85 % as determined by SDS-PAGE.
<b>Storage</b>	Store it under sterile conditions at -80°C. It is recommended that the protein be aliquoted for optimal storage. Avoid repeated freeze-thaw cycles.
<b>Reconstitution</b>	It is recommended that sterile water be added to the vial to prepare a stock solution of 0.13mg/ml. Centrifuge the vial at 4°C before opening to recover the entire contents.

## GENE INFORMATION

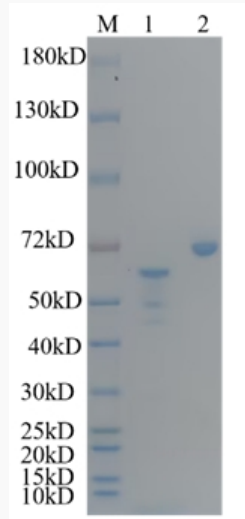
<b>Gene Name</b>	FOSL1 FOS-like antigen 1 [ Homo sapiens ]
<b>Official Symbol</b>	FOSL1
<b>Synonyms</b>	FOSL1; FOS-like antigen 1; fos-related antigen 1; fra 1; FOS-like antigen-1; FRA; FRA1; fra-1;
<b>Gene ID</b>	8061
<b>mRNA Refseq</b>	NM_005438
<b>Protein Refseq</b>	NP_005429
<b>MIM</b>	136515
<b>UniProt ID</b>	P15407

 Tel: 1-631-559-9269 1-516-512-3133

 Email: [info@creative-biomart.com](mailto:info@creative-biomart.com)  Fax: 1-631-938-8127

 45-1 Ramsey Road, Shirley, NY 11967, USA

**SDS-PAGE**



 Tel: 1-631-559-9269 1-516-512-3133

 Email: [info@creative-biomart.com](mailto:info@creative-biomart.com)  Fax: 1-631-938-8127

 45-1 Ramsey Road, Shirley, NY 11967, USA