

# Recombinant Full Length Human FOSL1 Protein, C-Flag-tagged

**Cat. No.** FOSL1-2065HFL    **Lot. No.** (See product label)

## SPECIFICATION

### Product Overview

Recombinant Full Length Human FOSL1 Protein, fused to Flag-tag at C-terminus, was expressed in Mammalian cells.

### Species

Human

### Source

Mammalian Cells

### Description

The Fos gene family consists of 4 members: FOS, FOSB, FOSL1, and FOSL2. These genes encode leucine zipper proteins that can dimerize with proteins of the JUN family, thereby forming the transcription factor complex AP-1. As such, the FOS proteins have been implicated as regulators of cell proliferation, differentiation, and transformation. Several transcript variants encoding different isoforms have been found for this gene.

### Form

25 mM Tris HCl, pH 7.3, 100 mM glycine, 10% glycerol.

### Molecular Mass

29.2 kDa

### AA Sequence

MFRDFGEPGPSSGNGGGYGGPAQPPAAAQAAQKQKFLVPSINTMSGSQELQWMV  
 QPHFLGPSSYPRPLTY PQYSPPQPRPGVIRALGPPPGVRRRRCPEQISPEEEERRRV  
 RRERNKLAAAKCRNRRKELTDFLQAETDKL EDEKSGLQREIEELQKQKERLELVLE  
 AHRPICKIPEGAKEGDTGSTSGTSSPPAPCRPVPCISLSPGPVL EPEALHTPTLMTT  
 PSLTPFTPSLVFTYPSTPEPCASAHRKSSSSSGDPSSDPLGSPTLLAL TRTRPLEQK  
 LISEEDLAANDILDYKDDDDKV

 Tel: 1-631-559-9269    1-516-512-3133

 Email: [info@creative-biomart.com](mailto:info@creative-biomart.com)     Fax: 1-631-938-8127

 45-1 Ramsey Road, Shirley, NY 11967, USA

<b>Purity</b>	> 80% as determined by SDS-PAGE and Coomassie blue staining.
<b>Stability</b>	Stable for 12 months from the date of receipt of the product under proper storage and handling conditions. Avoid repeated freeze-thaw cycles.
<b>Storage</b>	Store at -80 centigrade.
<b>Concentration</b>	>50 ug/mL as determined by microplate BCA method.
<b>Preparation</b>	Recombinant protein was captured through anti-DDK affinity column followed by conventional chromatography steps.
<b>Protein Families</b>	Druggable Genome, Transcription Factors
<b>Protein Pathways</b>	Wnt signaling pathway
<b>Full Length</b>	Full L.

## GENE INFORMATION

<b>Gene Name</b>	FOSL1 FOS like 1, AP-1 transcription factor subunit [ Homo sapiens (human) ]
<b>Official Symbol</b>	FOSL1
<b>Synonyms</b>	FRA; FRA1; fra-1
<b>Gene ID</b>	8061
<b>mRNA Refseq</b>	NM_005438.5
<b>Protein Refseq</b>	NP_005429.1

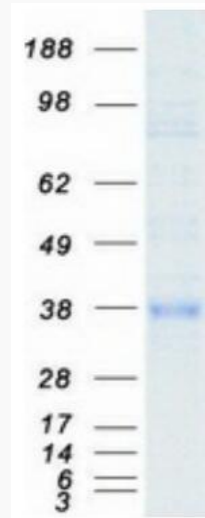
 Tel: 1-631-559-9269 1-516-512-3133

 Email: [info@creative-biomart.com](mailto:info@creative-biomart.com)  Fax: 1-631-938-8127

 45-1 Ramsey Road, Shirley, NY 11967, USA

**MIM** 136515

**UniProt ID** P15407



Coomassie blue staining of purified FOSL1 protein.

 Tel: 1-631-559-9269 1-516-512-3133

 Email: [info@creative-biomart.com](mailto:info@creative-biomart.com)  Fax: 1-631-938-8127

 45-1 Ramsey Road, Shirley, NY 11967, USA