

## Recombinant Human FOSL1 Protein, GST-tagged

Cat. No. FOSL1-4427H Lot. No. (See product label)

### SPECIFICATION

<b>Product Overview</b>	Human FOSL1 full-length ORF ( AAH16648.1, 1 a.a. - 271 a.a.) recombinant protein with GST-tag at N-terminal.
<b>Species</b>	Human
<b>Source</b>	Wheat Germ
<b>Description</b>	The Fos gene family consists of 4 members: FOS, FOSB, FOSL1, and FOSL2. These genes encode leucine zipper proteins that can dimerize with proteins of the JUN family, thereby forming the transcription factor complex AP-1. As such, the FOS proteins have been implicated as regulators of cell proliferation, differentiation, and transformation. [provided by RefSeq]
<b>Molecular Mass</b>	55.44 kDa
<b>AA Sequence</b>	MFRDFGEPGPSSGNGGGYGGPAQPPAAAQAAQKQKFLVPSINTMSGSQELQWMV QPHFLGPSSYPRPLTYPQYSPPQPRPGVIRALGPPPGVRRRRCPEQISPEEEERRRV RRERNKLAALKCRNRRKELTDFLQAETDKLEDEKSLQREIEELQKQKERLELVLEA HRPICKIPEGAKEGDTGSTSGTSSPPAPCRPVPCISLSPGPVLEPEALHTPTLMTTPS LTPFTPSLVFTYPSTPEPCASAHKSSSSSGDPSSDPLGSPTLLAL
<b>Applications</b>	Enzyme-linked Immunoabsorbent Assay Western Blot (Recombinant protein) Antibody Production Protein Array

 Tel: 1-631-559-9269 1-516-512-3133

 Email: [info@creative-biomart.com](mailto:info@creative-biomart.com)  Fax: 1-631-938-8127

 45-1 Ramsey Road, Shirley, NY 11967, USA

<b>Notes</b>	Best use within three months from the date of receipt of this protein.
<b>Storage</b>	Store at -80 centigrade. Aliquot to avoid repeated freezing and thawing.
<b>Storage Buffer</b>	50 mM Tris-HCl, 10 mM reduced Glutathione, pH=8.0 in the elution buffer.

## GENE INFORMATION

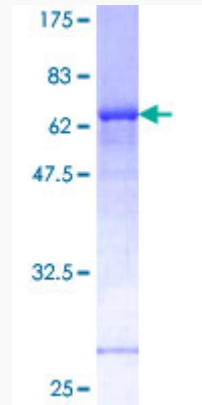
<b>Gene Name</b>	FOSL1 FOS-like antigen 1 [ Homo sapiens ]
<b>Official Symbol</b>	FOSL1
<b>Synonyms</b>	FOSL1; FOS-like antigen 1; fos-related antigen 1; fra 1; FOS-like antigen-1; FRA; FRA1; fra-1;
<b>Gene ID</b>	8061
<b>mRNA Refseq</b>	NM_005438
<b>Protein Refseq</b>	NP_005429
<b>MIM</b>	136515
<b>UniProt ID</b>	P15407

 Tel: 1-631-559-9269 1-516-512-3133

 Email: [info@creative-biomart.com](mailto:info@creative-biomart.com)  Fax: 1-631-938-8127

 45-1 Ramsey Road, Shirley, NY 11967, USA

**Quality Control  
Testing**



12.5% SDS-PAGE Stained with Coomassie Blue.

 Tel: 1-631-559-9269 1-516-512-3133

 Email: [info@creative-biomart.com](mailto:info@creative-biomart.com)  Fax: 1-631-938-8127

 45-1 Ramsey Road, Shirley, NY 11967, USA