

# Active Recombinant Full Length Human FOXO1 Protein, C-Flag-tagged

**Cat. No.** FOXO1-1038HFL    **Lot. No.** (See product label)

## SPECIFICATION

<b>Product Overview</b>	Recombinant Full Length Human FOXO1 Protein, fused to Flag-tag at C-terminus, was expressed in Mammalian cells.
<b>Species</b>	Human
<b>Source</b>	Mammalian Cells
<b>Description</b>	This gene belongs to the forkhead family of transcription factors which are characterized by a distinct forkhead domain. The specific function of this gene has not yet been determined; however, it may play a role in myogenic growth and differentiation. Translocation of this gene with PAX3 has been associated with alveolar rhabdomyosarcoma.
<b>Form</b>	25 mM Tris HCl, pH 7.3, 100 mM glycine, 10% glycerol.
<b>Bio-activity</b>	In vitro kinase assay substrate
<b>Molecular Mass</b>	69.5 kDa
<b>AA Sequence</b>	MAEAPQVVEIDPDFEPLRPRRSTWPLRPEFSQSNSATSSPAPSGSAAANPDAAA GLPSASAAAVSADF MSNLSLLEESEDFPQAPGSVAAAVAAAAAATGGLCGDFQ GPEAGCLHPAPPQPPPPGPLSQHPPVPPA AAGPLAGQPRKSSSSRRNAWGNLSY ADLITKAIESSAEKRLTLSQIYEWVMKSVPYFKDKGDSNSSAGWK NSIRHNLSLHSHK FIRVQNEGTGKSSWWMLNPEGGKSGKSPRRRAASMDNNSKFAKRSRAAKKKAS

 Tel: 1-631-559-9269    1-516-512-3133

 Email: [info@creative-biomart.com](mailto:info@creative-biomart.com)     Fax: 1-631-938-8127

 45-1 Ramsey Road, Shirley, NY 11967, USA

LQSG QEGAGDSPGSQFSKWPASPGSHSNDDFDNWSTFRPRTSSNASTISGRLSPI  
MTEQDDLGEQDVHSMVYPP SAAKMASTLPSLSEISNPENMENLLDNLNLLSSPTSL  
TVSTQSSPGTMMQQTPCYSFAPPNTSLNSPSPN YQKYTYGQSSMSPLPQMPIQTL  
QDNKSSYGGMSQYNCAPGLLKELLTSDSPPHNDIMTPVDPGVAQPNSR VLGQNV  
MMGPNSVMSTYGSQVSHNKMMNPSSHTHPGHAQQTSAVNGRPLPHTVSTMPHTS  
GMNRLTQVKT PVQVPLPHPMQMSALGGYSSVSSCNGYGRMGLLHQEKLPSDLGD  
MFIERLDCDMESIIRNDLMDGDTLDF  
NFDNVLPNQSFPHSVKTTTHSWVSGLEQKLISEEDLAANDILDYKDDDDKV

<b>Purity</b>	> 80% as determined by SDS-PAGE and Coomassie blue staining.
<b>Stability</b>	Stable for 12 months from the date of receipt of the product under proper storage and handling conditions. Avoid repeated freeze-thaw cycles.
<b>Storage</b>	Store at -80 centigrade.
<b>Concentration</b>	>50 ug/mL as determined by microplate BCA method.
<b>Preparation</b>	Recombinant protein was captured through anti-DDK affinity column followed by conventional chromatography steps.
<b>Protein Families</b>	Druggable Genome, Transcription Factors
<b>Protein Pathways</b>	Insulin signaling pathway, Pathways in cancer, Prostate cancer
<b>Full Length</b>	Full L.

## GENE INFORMATION

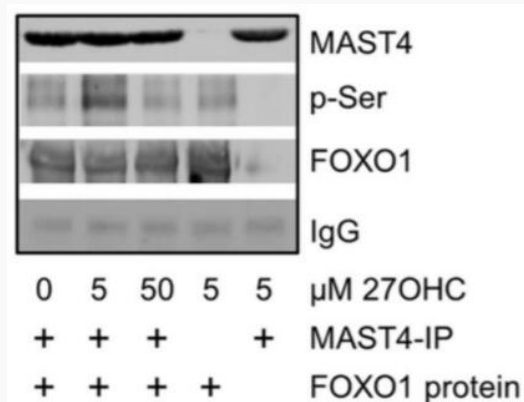
**Gene Name** [FOXO1 forkhead box O1 \[ Homo sapiens \(human\) \]](#)

 Tel: 1-631-559-9269 1-516-512-3133

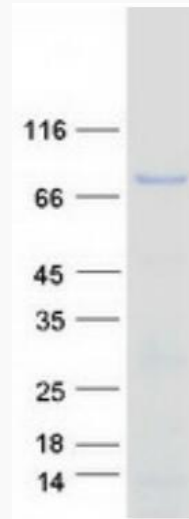
 Email: [info@creative-biomart.com](mailto:info@creative-biomart.com)  Fax: 1-631-938-8127

 45-1 Ramsey Road, Shirley, NY 11967, USA

<b>Official Symbol</b>	FOXO1
<b>Synonyms</b>	FKH1; FKHR; FOXO1A
<b>Gene ID</b>	2308
<b>mRNA Refseq</b>	NM_002015.4
<b>Protein Refseq</b>	NP_002006.2
<b>MIM</b>	136533
<b>UniProt ID</b>	Q12778



MAST4 phosphorylates FOXO1. Reaction mixtures from the kinase assay with recombinant FOXO1 as the substrate and immunoprecipitated kinase MAST4 from nd-SHSY5Y cells treated with different concentrations of 27-hydroxycholesterol (27OHC) for 30 minutes were analyzed in Western blot with indicated antibodies. IgG served as the control in the Western blotting.



Coomassie blue staining of purified FOXO1 protein.

 Tel: 1-631-559-9269 1-516-512-3133

 Email: [info@creative-biomart.com](mailto:info@creative-biomart.com)  Fax: 1-631-938-8127

 45-1 Ramsey Road, Shirley, NY 11967, USA