

Recombinant Human FOXP3 Protein, Myc/DDK-tagged, C13 and N15-labeled

Cat. No. FOXP3-720H Lot. No. (See product label)

SPECIFICATION

Product Overview

FOXP3 MS Standard C13 and N15-labeled recombinant protein (NP_054728) with a C-terminal MYC/DDK tag, was expressed in HEK293 cells.

Species

Human

Source

HEK293

Description

The protein encoded by this gene is a member of the forkhead/winged-helix family of transcriptional regulators. Defects in this gene are the cause of immunodeficiency polyendocrinopathy, enteropathy, X-linked syndrome (IPEX), also known as X-linked autoimmunity-immunodeficiency syndrome. Alternatively spliced transcript variants encoding different isoforms have been identified.

Molecular Mass

47.1 kDa

AA Sequence

MPNPRPGKPSAPSLALGSPGASPSWRAAPKASDLLGARGPGGTFQGRDLRGGAHASSSSLNPMPPSQLQLPTLPLVMVAPSGARLGPLPHLQALLQDRPHFMHQLSTVD AHARTPVLQVHPLESPAMISLTPPTTATGVFSLKARPGLPPIVASLEWVSREBALL CTFPNPSAPRKDSTLSAVPQSSYPLLANGVCKWPGCEKVFEEPEDFLKHCQADHLL DEKGRAQCLLQREMVQSLEQQLVLEKEKLSAMQAHLGKMLTKASSVASSDKGS CCIVAAGSQGPVVPASWGPREAPDSLFAVRRHLWGSHGNSTFPEFLHNMDYFKFH NMRPPFTYATLIRWAILEAPEKQRTLNEIYHWFTRMFAFFRNHPATWKNAIRHNLSL HKCFVRVESEKGA VWTVDLEFRKKRSQRPSRCSNPTPGPTRTRPLEQKLISEEDL

 Tel: 1-631-559-9269 1-516-512-3133

 Email: info@creative-biomart.com  Fax: 1-631-938-8127

 45-1 Ramsey Road, Shirley, NY 11967, USA

AANDILDYKDDDDKV

Purity > 80% as determined by SDS-PAGE and Coomassie blue staining

Stability Stable for 3 months from receipt of products under proper storage and handling conditions.

Storage Store at -80 centigrade. Avoid repeated freeze-thaw cycles.

Concentration 50 µg/mL as determined by BCA

Storage Buffer 100 mM glycine, 25 mM Tris-HCl, pH 7.3.

GENE INFORMATION

Gene Name FOXP3 forkhead box P3 [Homo sapiens (human)]

Official Symbol FOXP3

Synonyms FOXP3; forkhead box P3; immune dysregulation, polyendocrinopathy, enteropathy, X linked, IPEX; forkhead box protein P3; AIID; DIETER; JM2; PIDX; SCURFIN; XPID; scurfin; FOXP3delta7; immunodeficiency, polyendocrinopathy, enteropathy, X-linked; immune dysregulation, polyendocrinopathy, enteropathy, X-linked; IPEX; MGC141961; MGC141963;

Gene ID 50943

mRNA Refseq NM_014009

Protein Refseq NP_054728

 Tel: 1-631-559-9269 1-516-512-3133

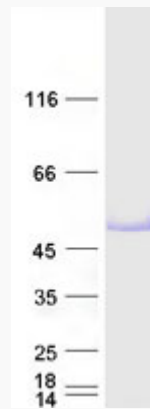
 Email: info@creative-biomart.com  Fax: 1-631-938-8127

 45-1 Ramsey Road, Shirley, NY 11967, USA

MIM 300292

UniProt ID Q9BZS1

SDS-PAGE



 Tel: 1-631-559-9269 1-516-512-3133

 Email: info@creative-biomart.com  Fax: 1-631-938-8127

 45-1 Ramsey Road, Shirley, NY 11967, USA