

Recombinant Human FPR1 Protein (306-350 aa), His-GST-Myc-tagged

Cat. No. FPR1-2489H **Lot. No.** (See product label)

SPECIFICATION

Product Overview	Recombinant Human FPR1 Protein (306-350 aa) is produced by E. coli expression system. This protein is fused with a 10xHis-GST tag at the N-terminal and a Myc tag at the C-terminal. Research Area: Immunology. Protein Description: Partial.
Species	Human
Source	E.coli
ProteinLength	306-350 aa
Description	High affinity receptor for N-formyl-methionyl peptides (fMLP), which are powerful neutrophil chemotactic factors. Binding of fMLP to the receptor stimulates intracellular calcium mobilization and superoxide anion release. This response is mediated via a G-protein that activates a phosphatidylinositol-calcium second messenger system.
Form	Tris-based buffer,50% glycerol
Molecular Mass	34.9 kDa
AA Sequence	QDFRERLIHALPASLERALTEDSTQTSDTATNSTLPSAEVELQAK
Purity	> 85% as determined by SDS-PAGE.
Notes	Repeated freezing and thawing is not recommended. Store working aliquots at 4

 Tel: 1-631-559-9269 1-516-512-3133

 Email: info@creative-biomart.com  Fax: 1-631-938-8127

 45-1 Ramsey Road, Shirley, NY 11967, USA

centigrade for up to one week.

Storage

The shelf life is related to many factors, storage state, buffer ingredients, storage temperature and the stability of the protein itself. Generally, the shelf life of liquid form is 6 months at -20 centigrade/-80 centigrade. The shelf life of lyophilized form is 12 months at -20 centigrade/-80 centigrade.

Concentration

A hardcopy of COA will be sent along with the products. Please refer to it for detailed information.

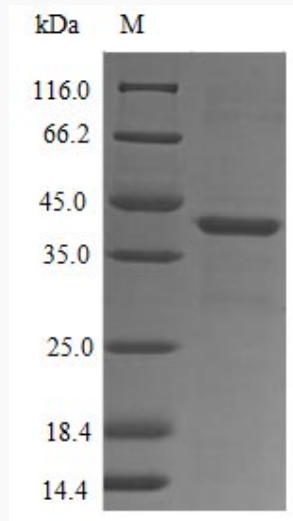
GENE INFORMATION

Gene Name	FPR1 formyl peptide receptor 1 [Homo sapiens]
Official Symbol	FPR1
Synonyms	FPR1; formyl peptide receptor 1; fMet-Leu-Phe receptor; FMLP; FPR; fMLP receptor;
Gene ID	2357
mRNA Refseq	NM_001193306
Protein Refseq	NP_001180235
MIM	136537
UniProt ID	P21462

 Tel: 1-631-559-9269 1-516-512-3133

 Email: info@creative-biomart.com  Fax: 1-631-938-8127

 45-1 Ramsey Road, Shirley, NY 11967, USA



(Tris-Glycine gel) Discontinuous SDS-PAGE (reduced) with 5% enrichment gel and 15% separation gel.

 Tel: 1-631-559-9269 1-516-512-3133

 Email: info@creative-biomart.com  Fax: 1-631-938-8127

 45-1 Ramsey Road, Shirley, NY 11967, USA