

## Recombinant Human FPR2 Protein, GST-tagged

**Cat. No.** FPR2-4487H    **Lot. No.** (See product label)

### SPECIFICATION

<b>Product Overview</b>	Human FPR2 partial ORF ( AAH29125.1, 163 a.a. - 205 a.a.) recombinant protein with GST-tag at N-terminal.
<b>Species</b>	Human
<b>Source</b>	Wheat Germ
<b>Description</b>	FPR2 (Formyl Peptide Receptor 2) is a Protein Coding gene. Diseases associated with FPR2 include Prion Disease. Among its related pathways are Peptide ligand-binding receptors and Immune response CCR3 signaling in eosinophils. GO annotations related to this gene include G-protein coupled receptor activity and N-formyl peptide receptor activity. An important paralog of this gene is FPR3.
<b>Molecular Mass</b>	30.36 kDa
<b>AA Sequence</b>	FLTTVTIPNGDTYCTFNFASWGGTPEERLKVAITMLTARGIIR
<b>Applications</b>	Enzyme-linked Immunoabsorbent Assay Western Blot (Recombinant protein) Antibody Production Protein Array
<b>Notes</b>	Best use within three months from the date of receipt of this protein.
<b>Storage</b>	Store at -80 centigrade. Aliquot to avoid repeated freezing and thawing.

 Tel: 1-631-559-9269    1-516-512-3133

 Email: [info@creative-biomart.com](mailto:info@creative-biomart.com)     Fax: 1-631-938-8127

 45-1 Ramsey Road, Shirley, NY 11967, USA

**Storage Buffer** 50 mM Tris-HCl, 10 mM reduced Glutathione, pH=8.0 in the elution buffer.

## GENE INFORMATION

**Gene Name** FPR2 formyl peptide receptor 2 [ Homo sapiens ]

**Official Symbol** FPR2

**Synonyms** FPR2; formyl peptide receptor 2; formyl peptide receptor like 1, FPRL1; N-formyl peptide receptor 2; ALXR; FMLP R II; FMLPX; FPR2A; FPRH2; HM63; LXA4R; RFP; FMLP-R-I; LXA4 receptor; FMLP-related receptor I; formyl peptide receptor-like 1; lipoxin A4 receptor (formyl peptide receptor related); FPRH1; FPRL1; FMLP-R-II;

**Gene ID** 2358

**mRNA Refseq** NM\_001005738

**Protein Refseq** NP\_001005738

**MIM** 136538

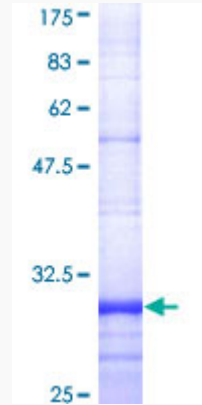
**UniProt ID** P25090

 Tel: 1-631-559-9269 1-516-512-3133

 Email: [info@creative-biomart.com](mailto:info@creative-biomart.com)  Fax: 1-631-938-8127

 45-1 Ramsey Road, Shirley, NY 11967, USA

**Quality Control  
Testing**



12.5% SDS-PAGE Stained with Coomassie Blue.

 Tel: 1-631-559-9269 1-516-512-3133

 Email: [info@creative-biomart.com](mailto:info@creative-biomart.com)  Fax: 1-631-938-8127

 45-1 Ramsey Road, Shirley, NY 11967, USA