

Recombinant Human FPR3 Protein, GST-tagged

Cat. No. FPR3-4489H **Lot. No.** (See product label)

SPECIFICATION

Product Overview	Human FPR3 partial ORF (NP_002021.3, 254 a.a. - 353 a.a.) recombinant protein with GST tag at N-terminal.
Species	Human
Source	Wheat Germ
ProteinLength	254-353 a.a.
Description	FPR3 (Formyl Peptide Receptor 3) is a Protein Coding gene. Among its related pathways are Peptide ligand-binding receptors and Integrin Pathway. GO annotations related to this gene include G-protein coupled receptor activity and N-formyl peptide receptor activity. An important paralog of this gene is FPR2.
Molecular Mass	36.63 kDa
AA Sequence	WFPYELIGILMAVWLKEMLLNGKYKIILVLINPTSSLAFFNSCLNPILYVFMGRNFQER LIRSLPTSLERALTEVPDSAQTSNTDTTSASPPEETELQAM
Applications	Enzyme-linked Immunoabsorbent Assay Western Blot (Recombinant protein) Antibody Production Protein Array
Notes	Best use within three months from the date of receipt of this protein.

 Tel: 1-631-559-9269 1-516-512-3133

 Email: info@creative-biomart.com  Fax: 1-631-938-8127

 45-1 Ramsey Road, Shirley, NY 11967, USA

Storage Store at -80 centigrade. Aliquot to avoid repeated freezing and thawing.

Storage Buffer 50 mM Tris-HCl, 10 mM reduced Glutathione, pH=8.0 in the elution buffer.

GENE INFORMATION

Gene Name FPR3 formyl peptide receptor 3 [Homo sapiens]

Official Symbol FPR3

Synonyms FPR3; formyl peptide receptor 3; formyl peptide receptor like 2, FPRL2; N-formyl peptide receptor 3; FMLPY; FPRH1; RMLP R I; FMLP-R-II; FMLP-related receptor II; formyl peptide receptor-like 2; FPRH2; FPRL2; RMLP-R-I; FML2_HUMAN;

Gene ID 2359

mRNA Refseq NM_002030

Protein Refseq NP_002021

MIM 136539

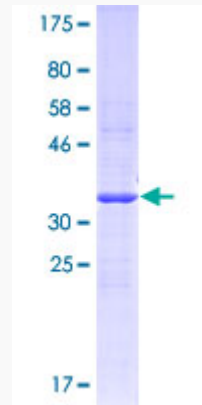
UniProt ID P25089

 Tel: 1-631-559-9269 1-516-512-3133

 Email: info@creative-biomart.com  Fax: 1-631-938-8127

 45-1 Ramsey Road, Shirley, NY 11967, USA

**Quality Control
Testing**



12.5% SDS-PAGE Stained with Coomassie Blue

 Tel: 1-631-559-9269 1-516-512-3133

 Email: info@creative-biomart.com  Fax: 1-631-938-8127

 45-1 Ramsey Road, Shirley, NY 11967, USA