

Recombinant Human FRK Protein, GST-tagged

Cat. No. FRK-4496H **Lot. No.** (See product label)

SPECIFICATION

Product Overview	Human FRK full-length ORF (AAH12916, 1 a.a. - 505 a.a.) recombinant protein with GST-tag at N-terminal.
Species	Human
Source	Wheat Germ
Description	The protein encoded by this gene belongs to the TYR family of protein kinases. This tyrosine kinase is a nuclear protein and may function during G1 and S phase of the cell cycle and suppress growth. [provided by RefSeq]
Molecular Mass	81.07 kDa
AA Sequence	<p>MSNICQRLWEYLEPYLPCLSTEADKSTVIENPGALCSPQSQRHGHYFVALFDYQAR TAEDLSFRAGDKLQVLDLTHEGWVWFARHLEKRRDGSSQQLQGYIPSNYVAEDRSL QAEPWFFGAIGRSDAEKQLLYSENKTGSFLIRESESQKGEFSLSVLDGAVVKHYRIK RLDEGGFFLTRRRIFSTLNEFVSHYTKTSDGLCVKLGKPCPKIQLVPAPFDLSYKTVDQ WEIDHNSIQLLKRLGSGQFGEVWEGLWNNTTPVAVKTLKPGSMDPNDLFLREAQIMK NLRHPKLIQLYAVCTLEDPIYIITELVRHGSLQEYLQNDTGSKIHLTQQVDMAAQVAS GMAYLESRNYIHRDLAARNVLVGEHNIYKVADFGLARVFKVDNEDIYESRHEIKLPVK WTAPEAIRSNKFSIKSDVVSFGILLYEITYGKMPYSGMTGAQVIQMLAQNYRLPQPS NCPQQFYNIMLECWNAEPKERPTFETLRWKLEDYFETDSSYSYDANNFIR</p>
Applications	Enzyme-linked Immunoabsorbent Assay Western Blot (Recombinant protein)

 Tel: 1-631-559-9269 1-516-512-3133

 Email: info@creative-biomart.com  Fax: 1-631-938-8127

 45-1 Ramsey Road, Shirley, NY 11967, USA



	Antibody Production Protein Array
Notes	Best use within three months from the date of receipt of this protein.
Storage	Store at -80 centigrade. Aliquot to avoid repeated freezing and thawing.
Storage Buffer	50 mM Tris-HCl, 10 mM reduced Glutathione, pH=8.0 in the elution buffer.

GENE INFORMATION

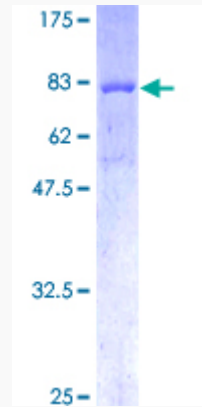
Gene Name	FRK fyn-related kinase [Homo sapiens]
Official Symbol	FRK
Synonyms	FRK; fyn-related kinase; PTK5, PTK5 protein tyrosine kinase 5; tyrosine-protein kinase FRK; GTK; RAK; protein-tyrosine kinase 5; PTK5 protein tyrosine kinase 5; nuclear tyrosine protein kinase RAK; PTK5;
Gene ID	2444
mRNA Refseq	NM_002031
Protein Refseq	NP_002022
MIM	606573
UniProt ID	P42685

Tel: 1-631-559-9269 1-516-512-3133

Email: info@creative-biomart.com Fax: 1-631-938-8127

45-1 Ramsey Road, Shirley, NY 11967, USA

**Quality Control
Testing**



12.5% SDS-PAGE Stained with Coomassie Blue.

 Tel: 1-631-559-9269 1-516-512-3133

 Email: info@creative-biomart.com  Fax: 1-631-938-8127

 45-1 Ramsey Road, Shirley, NY 11967, USA