

## Recombinant Human FRS2 Protein, GST-tagged

**Cat. No.** FRS2-4506H    **Lot. No.** (See product label)

### SPECIFICATION

<b>Product Overview</b>	Human FRS2 full-length ORF ( AAH21562.1, 1 a.a. - 512 a.a.) recombinant protein with GST-tag at N-terminal.
<b>Species</b>	Human
<b>Source</b>	Wheat Germ
<b>Description</b>	FRS2 (Fibroblast Growth Factor Receptor Substrate 2) is a Protein Coding gene. Diseases associated with FRS2 include Nasal Cavity Squamous Cell Carcinoma. Among its related pathways are RET signaling and FGF signaling pathway. GO annotations related to this gene include insulin receptor binding and transmembrane receptor protein tyrosine kinase adaptor activity. An important paralog of this gene is FRS3.
<b>Molecular Mass</b>	82.72 kDa
<b>AA Sequence</b>	<p>MGSCCSCPDKDTPVDNHRNKFVINVDDDGNELGSGIMELTDTLILYTRKRDSVK          WHYLCRLRRYGYDSNLFSFESGRRCQTGQGIFAFKCARAEELFNMLQEIMQNNSINV          VEEPVVERNHHQTELEVPRTPRTPPTTPGFAAQNLNGYPRYPSPFGDASSHPSSRHP          SVGSARLPSVGEESTHPLLVAEEQVHTYVNTTGVQEERKNRTSVHVPLEARVSNAE          SSTPKEEPSSIEDRDPQILLEPEGVKFVLGPTPVQKQLMEKEKLEQLGRDQVSGSGA          NNTWDTGYDSDERRDAPSVNKLVEYENINGLSIPSASGVRRGRLTSTSTSDTQNINN          SAQRRTALLNYENLPSLPPVWEARKLSRDEDDNLGPKTPSLNGYHNNLDPMHNYV          NTENVTVPASAHKIEYSRRRDCTPTVFNFDIRRPSLEHRQLNYIQVDLEGGSDSDNP</p>

 Tel: 1-631-559-9269    1-516-512-3133

 Email: [info@creative-biomart.com](mailto:info@creative-biomart.com)     Fax: 1-631-938-8127

 45-1 Ramsey Road, Shirley, NY 11967, USA

QTPKTPTTPLPQTPTRRELYAVIDIERTAAMSNLQKALPRDDGTSRKTRHNSTDLP  
MLAWK

**Applications**  
Enzyme-linked Immunoabsorbent Assay  
Western Blot (Recombinant protein)  
Antibody Production  
Protein Array

**Notes** Best use within three months from the date of receipt of this protein.

**Storage** Store at -80 centigrade. Aliquot to avoid repeated freezing and thawing.

**Storage Buffer** 50 mM Tris-HCl, 10 mM reduced Glutathione, pH=8.0 in the elution buffer.

## GENE INFORMATION

**Gene Name** [FRS2 fibroblast growth factor receptor substrate 2 \[ Homo sapiens \]](#)

**Official Symbol** [FRS2](#)

**Synonyms** FRS2; fibroblast growth factor receptor substrate 2; FRS2A; FRS2alpha; SNT 1; SNT1; FGFR substrate 2; FGFR signalling adaptor; FGFR-signaling adaptor SNT; suc1-associated neurotrophic factor target 1; SNT; SNT-1;

**Gene ID** [10818](#)

**mRNA Refseq** [NM\\_001042555](#)

**Protein Refseq** [NP\\_001036020](#)

**MIM** [607743](#)

 Tel: 1-631-559-9269 1-516-512-3133

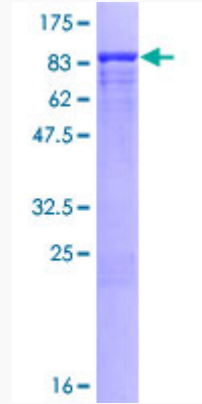
 Email: [info@creative-biomart.com](mailto:info@creative-biomart.com)  Fax: 1-631-938-8127

 45-1 Ramsey Road, Shirley, NY 11967, USA

UniProt ID

Q8WU20

Quality Control  
Testing



12.5% SDS-PAGE Stained with Coomassie Blue.

 Tel: 1-631-559-9269 1-516-512-3133

 Email: [info@creative-biomart.com](mailto:info@creative-biomart.com)  Fax: 1-631-938-8127

 45-1 Ramsey Road, Shirley, NY 11967, USA