

## Recombinant Human FSHR protein(18-366aa), His-Trx-tagged

Cat. No. FSHR-1316H Lot. No. (See product label)

### SPECIFICATION

<b>Product Overview</b>	Recombinant Human FSHR protein(P23945)(18-366aa), fused with N-terminal His and Trx tag, was expressed in E.coli.
<b>Species</b>	Human
<b>Source</b>	E.coli
<b>ProteinLength</b>	18-366aa
<b>Form</b>	If the delivery form is liquid, the default storage buffer is Tris/PBS-based buffer, 5%-50% glycerol. If the delivery form is lyophilized powder, the buffer before lyophilization is Tris/PBS-based buffer, 6% Trehalose, pH 8.0.
<b>Molecular Mass</b>	58.1 kDa
<b>Purity</b>	Greater than 85% as determined by SDS-PAGE.
<b>Storage</b>	Store at -20°C/-80°C upon receipt, aliquoting is necessary for mutiple use. Avoid repeated freeze-thaw cycles.
<b>Reconstitution</b>	We recommend that this vial be briefly centrifuged prior to opening to bring the contents to the bottom. Please reconstitute protein in deionized sterile water to a concentration of 0.1-1.0 mg/mL. We recommend to add 5-50% of glycerol (final concentration) and aliquot for long-term storage at -20°C/-80°C.

 Tel: 1-631-559-9269 1-516-512-3133

 Email: [info@creative-biomart.com](mailto:info@creative-biomart.com)  Fax: 1-631-938-8127

 45-1 Ramsey Road, Shirley, NY 11967, USA

**AA Sequence**

CHHRICHCSNRVFLCQESKVTEIPSDLPRNAIELRFVLTCLRVIQKGAFSGFGDLEKIE  
 ISQNDVLEVIEADVFSNLPKLHEIRIEKANNLLYINPEAFQNLPNLQYLLISNTGIKHLPD  
 VHKIHSLQKVLLDIQDNINIHTIERNNSFVGLSFESVILWLNKNGIQEIHNCAFNGTQLDE  
 LNLSDNNNLEELPNDV FHGASGPVILDISRTRIHSLPSYGLLENLKKLRARSTYNLKKLP  
 TLEKLVALMEASLTYP SHCCAFANWRRQISELHPICNKSILRQEVDYMTQARGQRSS  
 LAEDNESSYSRGFDMTYTEFDYDLCNEVVDVTCSPKPD AFNPCEDIMGYNILR

**GENE INFORMATION**

**Gene Name** [FSHR follicle stimulating hormone receptor \[ Homo sapiens \]](#)

**Official Symbol** [FSHR](#)

**Synonyms** [FSHR](#); follicle stimulating hormone receptor; ODG1; follicle-stimulating hormone receptor; FSHRO; LGR1; FSH receptor; follitropin receptor; MGC141667; MGC141668;

**Gene ID** [2492](#)

**mRNA Refseq** [NM\\_000145](#)

**Protein Refseq** [NP\\_000136](#)

**MIM** [136435](#)

**UniProt ID** [P23945](#)

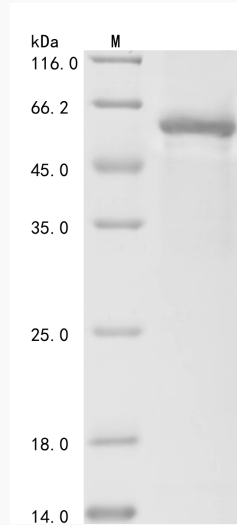
 Tel: 1-631-559-9269 1-516-512-3133

 Email: [info@creative-biomart.com](mailto:info@creative-biomart.com)  Fax: 1-631-938-8127

 45-1 Ramsey Road, Shirley, NY 11967, USA



SDS-PAGE



Tel: 1-631-559-9269 1-516-512-3133

Email: [info@creative-biomart.com](mailto:info@creative-biomart.com) Fax: 1-631-938-8127

45-1 Ramsey Road, Shirley, NY 11967, USA