

# Recombinant Human FSHR Protein, His tagged, R-PE labeled

Cat. No. FSHR-24H-RPE Lot. No. (See product label)

## SPECIFICATION

<b>Product Overview</b>	R-PE labeled Recombinant Human FSHR Protein with His tag was expressed in HEK293.
<b>Species</b>	Human
<b>Source</b>	HEK293
<b>Description</b>	The protein encoded by this gene belongs to family 1 of G-protein coupled receptors. It is the receptor for follicle stimulating hormone and functions in gonad development. Mutations in this gene cause ovarian dysgenesis type 1, and also ovarian hyperstimulation syndrome. Alternative splicing results in multiple transcript variants.
<b>Molecular Mass</b>	The protein has a calculated MW of 40 kDa.
<b>AA Sequence</b>	HHHHHHCHHRICHCSNRVFLCQESKVTEIPSDLPRNAIELRFVLTKLRVIQKGAFGSGF GDLEKIEISQNDVLEVIEADVFSNLPKLHEIRIEKANNLLYINPEAFQNLPNLQYLLISNT GIKHLDPDVHKKIHSLQKVLLDIQDNINIHTIERNFSFVGLSFESVILWLNKNGIQEIHNCFA NGTQLDELNLSDNNNLEELPNDVDFHGASGPVILDISRTRIHSLPSYGLENLKKLRARS TYNLKKLPTLEKLVALMEASLTYPSCCAFANWRRQISELHPICNKSILRQEVDMYMTQ ARGQRSSLAEDNESSYSRGFDMTYTEFDYDLCNEVVDVTCSPKPDFAFNPCEDIMG YNILR
<b>Purity</b>	> 90% by SDS-PAGE
<b>Storage</b>	Store it under sterile conditions at -20 to -80 centigrade. It is recommended that the

 Tel: 1-631-559-9269 1-516-512-3133

 Email: [info@creative-biomart.com](mailto:info@creative-biomart.com)  Fax: 1-631-938-8127

 45-1 Ramsey Road, Shirley, NY 11967, USA

protein be aliquoted for optimal storage. Avoid repeated freeze-thaw cycles.

<b>Concentration</b>	0.83 mg/mL
<b>Storage Buffer</b>	Sterile PBS, pH 7.4, 0.5% SKL
<b>Conjugation</b>	R-PE

## GENE INFORMATION

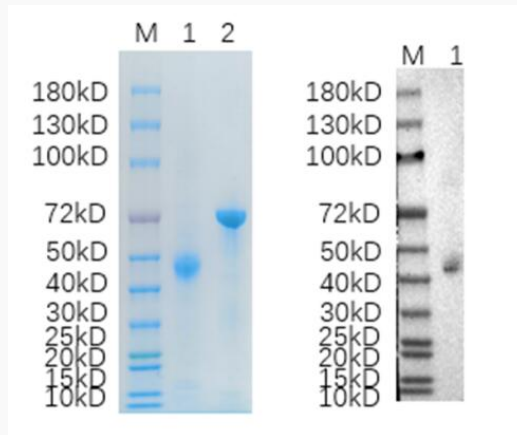
<b>Gene Name</b>	FSHR follicle stimulating hormone receptor [ Homo sapiens ]
<b>Official Symbol</b>	FSHR
<b>Synonyms</b>	FSHR; follicle stimulating hormone receptor; ODG1; follicle-stimulating hormone receptor; FSHRO; LGR1; FSH receptor; follitropin receptor; MGC141667; MGC141668;
<b>Gene ID</b>	2492
<b>mRNA Refseq</b>	NM_000145
<b>Protein Refseq</b>	NP_000136
<b>MIM</b>	136435
<b>UniProt ID</b>	P23945

 Tel: 1-631-559-9269 1-516-512-3133

 Email: [info@creative-biomart.com](mailto:info@creative-biomart.com)  Fax: 1-631-938-8127

 45-1 Ramsey Road, Shirley, NY 11967, USA

**Reducing 12% SDS-  
PAGE (CBB stained)  
and WB (Anti-His  
Mouse Monoclonal  
antibody) analysis  
profile of purified  
FSHR.**



1. FSHR-24H
2. BSA

 Tel: 1-631-559-9269 1-516-512-3133

 Email: [info@creative-biomart.com](mailto:info@creative-biomart.com)  Fax: 1-631-938-8127

 45-1 Ramsey Road, Shirley, NY 11967, USA