

Recombinant Human FSHR Protein, GST-tagged

Cat. No. FSHR-4522H **Lot. No.** (See product label)

SPECIFICATION

Product Overview	Human FSHR partial ORF (NP_000136, 18 a.a. - 120 a.a.) recombinant protein with GST-tag at N-terminal.
Species	Human
Source	Wheat Germ
Description	The protein encoded by this gene belongs to family 1 of G-protein coupled receptors. It is the receptor for follicle stimulating hormone and functions in gonad development. Alternative splicing occurs at this locus and two transcript variants encoding distinct isoforms have been identified. [provided by RefSeq]
Molecular Mass	37.07 kDa
AA Sequence	CHHRICHCSNRVFLCQESKVTEIPSDLPRNAIELRFVLTKLRVIQKGAFSGFGDLEKIE ISQNDVLEVIEADVFSNLPKLHEIRIEKANNLLYINPEAFQNL
Applications	Enzyme-linked Immunoabsorbent Assay Western Blot (Recombinant protein) Antibody Production Protein Array
Notes	Best use within three months from the date of receipt of this protein.
Storage	Store at -80 centigrade. Aliquot to avoid repeated freezing and thawing.

 Tel: 1-631-559-9269 1-516-512-3133

 Email: info@creative-biomart.com  Fax: 1-631-938-8127

 45-1 Ramsey Road, Shirley, NY 11967, USA

Storage Buffer 50 mM Tris-HCl, 10 mM reduced Glutathione, pH=8.0 in the elution buffer.

GENE INFORMATION

Gene Name FSHR follicle stimulating hormone receptor [Homo sapiens]

Official Symbol FSHR

Synonyms FSHR; follicle stimulating hormone receptor; ODG1; follicle-stimulating hormone receptor; FSHRO; LGR1; FSH receptor; follitropin receptor; MGC141667; MGC141668;

Gene ID 2492

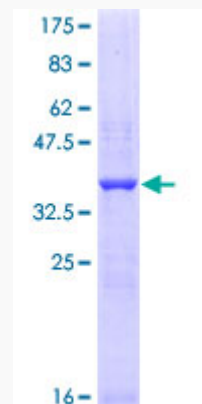
mRNA Refseq NM_000145

Protein Refseq NP_000136

MIM 136435

UniProt ID P23945

Quality Control Testing



Tel: 1-631-559-9269 1-516-512-3133

Email: info@creative-biomart.com Fax: 1-631-938-8127

45-1 Ramsey Road, Shirley, NY 11967, USA



12.5% SDS-PAGE Stained with Coomassie Blue.

 Tel: 1-631-559-9269 1-516-512-3133

 Email: info@creative-biomart.com  Fax: 1-631-938-8127

 45-1 Ramsey Road, Shirley, NY 11967, USA