

Recombinant Horse FST protein(30-344aa), His-tagged

Cat. No. FST-498H Lot. No. (See product label)

SPECIFICATION

Product Overview	Recombinant Horse FST protein(O62650)(30-344aa), fused with C-terminal His tag, was expressed in HEK293.
Species	Horse
Source	HEK293
ProteinLength	30-344aa
Form	If the delivery form is liquid, the default storage buffer is Tris/PBS-based buffer, 5%-50% glycerol. If the delivery form is lyophilized powder, the buffer before lyophilization is Tris/PBS-based buffer, 6% Trehalose, pH 8.0.
Molecular Mass	36.9 kDa
Purity	Greater than 90% as determined by SDS-PAGE. Greater than 90% as determined by SEC-HPLC.
Storage	Store at -20°C/-80°C upon receipt, aliquoting is necessary for multiple use. Avoid repeated freeze-thaw cycles.
Reconstitution	We recommend that this vial be briefly centrifuged prior to opening to bring the contents to the bottom. Please reconstitute protein in deionized sterile water to a concentration of 0.1-1.0 mg/mL. We recommend to add 5-50% of glycerol (final concentration) and aliquot for long-term storage at -20°C/-80°C.

 Tel: 1-631-559-9269 1-516-512-3133

 Email: info@creative-biomart.com  Fax: 1-631-938-8127

 45-1 Ramsey Road, Shirley, NY 11967, USA

AA Sequence

GNCWLRQAKNGRCQVLYKTELSKEECCSTGRLSTSWTEEDVNDNTLFKWMIFNGG
APNCIPCKETCDNVDCGPGKCKRMNKKNKPRCVCAPDCSNITWKGPCGLDGKTY
RNECALLKARCKEQPELEVQYQGKCKKTCRDVNCPGSSTCVVDQTNNAYCVTCNR
ICPEPTSSEQYLCGNDGVTYSSACHLRKATCLLGRSIGLAYEGKCIKAKSCEDIQCTG
GKKCLWDFKVGRCRLCDELCPDSKSEEPVCASDNATYASECAMKEAACSSGVL
LEVKHSGSCNSISEDTEEEEEDEDEDQDYSFPISSILEW

GENE INFORMATION

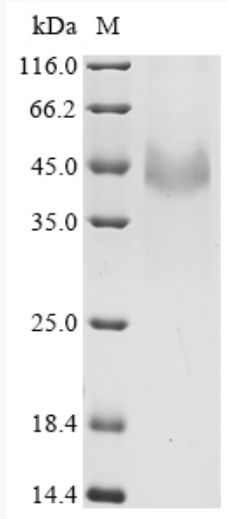
Gene Name	FST follistatin [<i>Equus caballus</i>]
Official Symbol	FST
Synonyms	FST; follistatin; FS; activin-binding protein;
Gene ID	100033825
mRNA Refseq	NM_001081811
Protein Refseq	NP_001075280

 Tel: 1-631-559-9269 1-516-512-3133

 Email: info@creative-biomart.com  Fax: 1-631-938-8127

 45-1 Ramsey Road, Shirley, NY 11967, USA

SDS-PAGE



 Tel: 1-631-559-9269 1-516-512-3133

 Email: info@creative-biomart.com  Fax: 1-631-938-8127

 45-1 Ramsey Road, Shirley, NY 11967, USA