

Recombinant Human FSTL1 Protein(Glu21-Ile308)

Cat. No. FSTL1-149H **Lot. No.** (See product label)

SPECIFICATION

Product Overview	Recombinant Human FSTL1 Protein(Glu21-Ile308)(Q12841) was expressed in E.coli.
Species	Human
Source	E.coli
ProteinLength	Glu21-Ile308
Form	Lyophilized from a 0.2 µm filtered solution of PBS, pH 7.4.
Molecular Mass	33 KDa
Endotoxin	< 1 EU/µg as determined by LAL test.
Purity	Greater than 90% as determined by reducing SDS-PAGE.
Storage	Lyophilized protein should be stored at ≤ -20°C, stable for one year after receipt. Reconstituted protein solution can be stored at 2-8°C for 2-7 days. Aliquots of reconstituted samples are stable at ≤ -20°C for 3 months.
Reconstitution	Always centrifuge tubes before opening.Do not mix by vortex or pipetting. It is not recommended to reconstitute to a concentration less than 100µg/ml. Dissolve the lyophilized protein in distilled water. Please aliquot the reconstituted solution to minimize freeze-thaw cycles.

 Tel: 1-631-559-9269 1-516-512-3133

 Email: info@creative-biomart.com  Fax: 1-631-938-8127

 45-1 Ramsey Road, Shirley, NY 11967, USA



AA Sequence

MEEELRSKSKICANVFCGAGRECAV TEKGEPTCLCIEQCKPHKRPVCGSN
GKTYLNHCELHRDACTGSKIQVDY DGHCKEKKS SVSPSASPVVCYQSNRD
ELRRRIIQWLEAEIIPDGWFSKGSN YSEILDKYFKNFDNGDSRLDSSEFL
KFVEQNETAINITTPDQENKLLR GLCVDALIELSDENADWKLSFQEFL
KCLNPSFNPPEKKCALEDETYADGA ETEVDCNRCVCACGNWVCTAMTCDG
KNQKG

GENE INFORMATION

Gene Name [FSTL1 follistatin-like 1 \[Homo sapiens \]](#)

Official Symbol [FSTL1](#)

Synonyms [FSTL1](#); [follistatin-like 1](#); [follistatin-related protein 1](#); [FRP](#); [FSL1](#); [follistatin-like protein 1](#); [FLJ50214](#); [FLJ52277](#)

Gene ID [11167](#)

mRNA Refseq [NM_007085](#)

Protein Refseq [NP_009016](#)

MIM [605547](#)

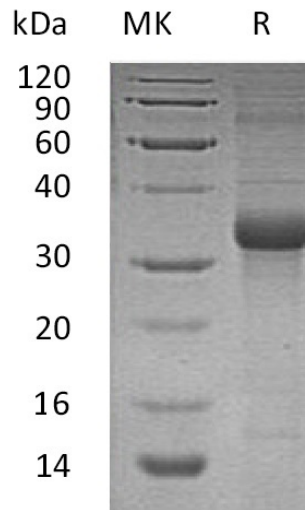
UniProt ID [Q12841](#)

Tel: 1-631-559-9269 1-516-512-3133

Email: info@creative-biomart.com Fax: 1-631-938-8127

45-1 Ramsey Road, Shirley, NY 11967, USA

SDS-PAGE



 Tel: 1-631-559-9269 1-516-512-3133

 Email: info@creative-biomart.com  Fax: 1-631-938-8127

 45-1 Ramsey Road, Shirley, NY 11967, USA