

Recombinant Full Length Human FSTL1 Protein, C-Flag-tagged

Cat. No. FSTL1-1992HFL Lot. No. (See product label)

SPECIFICATION

Product Overview	Recombinant Full Length Human FSTL1 Protein, fused to Flag-tag at C-terminus, was expressed in Mammalian cells.
Species	Human
Source	Mammalian Cells
Description	This gene encodes a protein with similarity to follistatin, an activin-binding protein. It contains an FS module, a follistatin-like sequence containing 10 conserved cysteine residues. This gene product is thought to be an autoantigen associated with rheumatoid arthritis.
Form	25 mM Tris HCl, pH 7.3, 100 mM glycine, 10% glycerol.
Molecular Mass	32.6 kDa
AA Sequence	MWKRWLALALVAVAVVRAEEELRSKSKICANVFCGAGRECAVTEKGEPTCLCIE QCKPHKRPVCGSNG KTYLNHCELHRDACLTGSKIQVDYDGHCKEKKSVSPSASPV VCYQSNRDELRRRIIQWLEAEIIPDGWFS KGSNYSEILDKYFKNFDNGDSRLDSSEF LKFVEQNETAINITYPDQENKLLRGLCVDALIELSDENAD WKLSFQEFLKCLNPSF NPPEKKCALEDETYADGAETEVDNRCVCACGNWVCTAMTCDGKNQKGAQTQTE EEMTRYVQELQKHQETAETKRVSTKEI TRTRPLEQKLISEEDLAANDILDYKDDDD KV

Tel: 1-631-559-9269 1-516-512-3133

Email: info@creative-biomart.com Fax: 1-631-938-8127

45-1 Ramsey Road, Shirley, NY 11967, USA

Purity	> 80% as determined by SDS-PAGE and Coomassie blue staining.
Stability	Stable for 12 months from the date of receipt of the product under proper storage and handling conditions. Avoid repeated freeze-thaw cycles.
Storage	Store at -80 centigrade.
Concentration	>50 ug/mL as determined by microplate BCA method.
Preparation	Recombinant protein was captured through anti-DDK affinity column followed by conventional chromatography steps.
Protein Families	Secreted Protein
Full Length	Full L.

GENE INFORMATION

Gene Name	FSTL1 follistatin like 1 [Homo sapiens (human)]
Official Symbol	FSTL1
Synonyms	FRP; FSL1; OCC1; OCC-1; tsc36; MIR198
Gene ID	11167
mRNA Refseq	NM_007085.5
Protein Refseq	NP_009016.1
MIM	605547

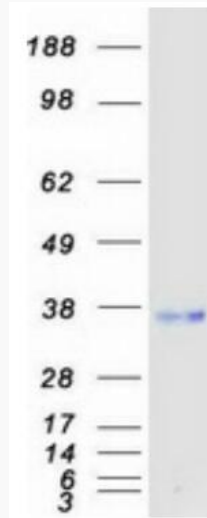
 Tel: 1-631-559-9269 1-516-512-3133

 Email: info@creative-biomart.com  Fax: 1-631-938-8127

 45-1 Ramsey Road, Shirley, NY 11967, USA

UniProt ID

Q12841



Coomassie blue staining of purified FSTL1 protein.

 Tel: 1-631-559-9269 1-516-512-3133

 Email: info@creative-biomart.com  Fax: 1-631-938-8127

 45-1 Ramsey Road, Shirley, NY 11967, USA