

Recombinant Human FSTL1 protein, His-tagged

Cat. No. FSTL1-714H Lot. No. (See product label)

SPECIFICATION

Product Overview	Recombinant Human FSTL1 protein(Q12841-1)(Glu21-Ile308) is expressed from HEK293 with His tag at the C-Terminus.
Species	Human
Source	HEK293
ProteinLength	21-308 aa
Form	Lyophilized from 0.22µm filtered solution in PBS (pH 7.4).
Molecular Mass	The protein has a predicted MW of 33.77 kDa. Due to glycosylation, the protein migrates to 48-58 kDa based on Bis-Tris PAGE result.
Endotoxin	Less than 1 EU per µg by the LAL method.
Purity	> 95% as determined by Bis-Tris PAGE > 95% as determined by HPLC
Storage	Store at -20 to -80°C for 12 months as supplied from date of receipt. -80°C for 3 months after reconstitution. Recommend to aliquot the protein into smaller quantities for optimal storage. Please minimize freeze-thaw cycles.
Reconstitution	Dissolve the lyophilized protein in distilled water.
protein Refseq-	http://www.ncbi.nlm.nih.gov/protein/NP_009016.1

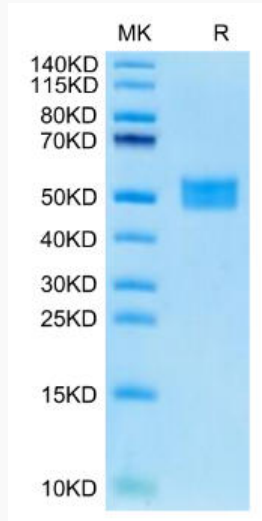
 Tel: 1-631-559-9269 1-516-512-3133

 Email: info@creative-biomart.com  Fax: 1-631-938-8127

 45-1 Ramsey Road, Shirley, NY 11967, USA

Weblink**Unit ID** Q12841**Unit ID-Weblink** <http://www.uniprot.org/uniprot/Q12841>**GENE INFORMATION****Gene Name** FSTL1 follistatin-like 1 [Homo sapiens]**Official Symbol** FSTL1**Synonyms** FSTL1; follistatin-like 1; follistatin-related protein 1; FRP; FSL1; follistatin-like protein 1; FLJ50214; FLJ52277;**Gene ID** 11167**mRNA Refseq** NM_007085**protein Refseq** NP_009016**MIM** 605547 Tel: 1-631-559-9269 1-516-512-3133 Email: info@creative-biomart.com  Fax: 1-631-938-8127 45-1 Ramsey Road, Shirley, NY 11967, USA

Bis-Tris PAGE



 Tel: 1-631-559-9269 1-516-512-3133

 Email: info@creative-biomart.com  Fax: 1-631-938-8127

 45-1 Ramsey Road, Shirley, NY 11967, USA