

Recombinant Human FSTL3 protein, His-tagged

Cat. No. FSTL3-1089H Lot. No. (See product label)

SPECIFICATION

Product Overview	Recombinant Human FSTL3 protein(O95633-1)(Met27-Val263), fused with C-terminal His tag, was expressed in HEK293.
Species	Human
Source	HEK293
ProteinLength	Met27-Val263
Tag	C-His
Form	Lyophilized from 0.22µm filtered solution in PBS (pH 7.4). Normally 8% trehalose is added as protectant before lyophilization.
Bio-activity	Immobilized Human FSTL3, His Tag at 0.5ug/ml (100ul/Well) on the plate. Dose response curve for Anti-FSTL3 Antibody, hFc Tag with the EC50 of 2.7ng/ml determined by ELISA (QC Test).
Molecular Mass	The protein has a predicted MW of 26.1 kDa. Due to glycosylation, the protein migrates to 35-40 kDa based on Tris-Bis PAGE result.
Endotoxin	Less than 1EU per µg by the LAL method.
Purity	> 95% as determined by Tris-Bis PAGE;> 95% as determined by HPLC

 Tel: 1-631-559-9269 1-516-512-3133

 Email: info@creative-biomart.com  Fax: 1-631-938-8127

 45-1 Ramsey Road, Shirley, NY 11967, USA

Storage Reconstituted protein stable at -80°C for 12 months, 4°C for 1 week. Use a manual defrost freezer and avoid repeated freeze-thaw cycles.

Reconstitution Centrifuge tubes before opening. Reconstituting to a concentration more than 100 µg/ml is recommended. Dissolve the lyophilized protein in distilled water.

GENE INFORMATION

Gene Name [FSTL3 follistatin-like 3 \(secreted glycoprotein\) \[Homo sapiens \]](#)

Official Symbol [FSTL3](#)

Synonyms FSTL3; follistatin-like 3 (secreted glycoprotein); follistatin-related protein 3; FLRG; follistatin related protein; FSRP; follistatin-like protein 3; follistatin-related gene protein;

Gene ID [10272](#)

mRNA Refseq [NM_005860](#)

Protein Refseq [NP_005851](#)

MIM [605343](#)

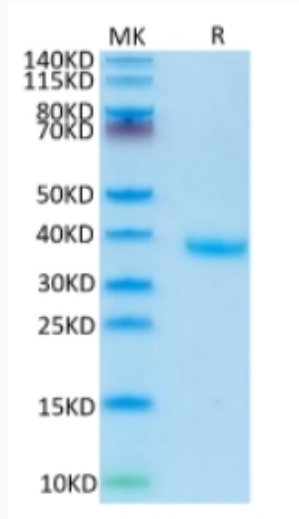
UniProt ID [O95633](#)

 Tel: 1-631-559-9269 1-516-512-3133

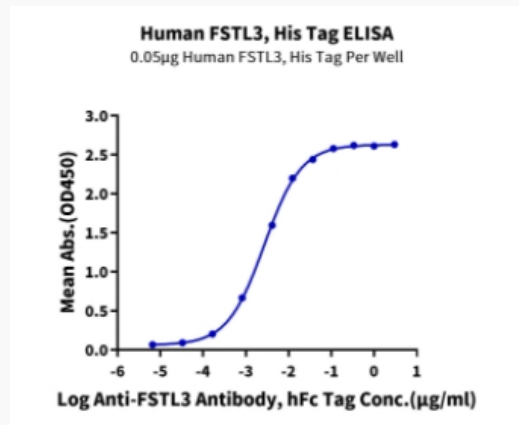
 Email: info@creative-biomart.com  Fax: 1-631-938-8127

 45-1 Ramsey Road, Shirley, NY 11967, USA

Tris-Bis PAGE



ELISA Data



 Tel: 1-631-559-9269 1-516-512-3133

 Email: info@creative-biomart.com  Fax: 1-631-938-8127

 45-1 Ramsey Road, Shirley, NY 11967, USA