

## Recombinant Human FSTL3 Protein, GST-tagged

**Cat. No.** FSTL3-4527H    **Lot. No.** (See product label)

### SPECIFICATION

<b>Product Overview</b>	Human FSTL3 full-length ORF (NP_005851.1, 27 a.a. - 263 a.a.) recombinant protein with GST tag at N-terminal.
<b>Species</b>	Human
<b>Source</b>	Wheat Germ
<b>Description</b>	Follistatin-like 3 is a secreted glycoprotein of the follistatin-module-protein family. It may have a role in leukemogenesis. [provided by RefSeq]
<b>Molecular Mass</b>	51.7 kDa
<b>AA Sequence</b>	<p>MGSGNPAPGGVCWLQQGQEATCSLVLQTDVTRAECASGNIDTAWSNLTHPGNKI  NLLGFLGLVHCLPCKDSCDGVCEGPGKACRMLGGRPRCECAPDCSGLPARLQVCG  SDGATYRDECELRAARCRGHPDLSVMYRGRRCRKSCHEVVCPRPQSCVVDQTGSA  HCVVCRAAPCPVPSSPGQELCGNNNVTYISSCHMRQATCFLGRSIGVRHAGSCAG  TPEPPGGESAEEEEENFV</p>
<b>Applications</b>	<p>Enzyme-linked Immunoabsorbent Assay  Western Blot (Recombinant protein)  Antibody Production  Protein Array</p>
<b>Notes</b>	Best use within three months from the date of receipt of this protein.

 Tel: 1-631-559-9269    1-516-512-3133

 Email: [info@creative-biomart.com](mailto:info@creative-biomart.com)     Fax: 1-631-938-8127

 45-1 Ramsey Road, Shirley, NY 11967, USA

**Storage** Store at -80 centigrade. Aliquot to avoid repeated freezing and thawing.

**Storage Buffer** 50 mM Tris-HCl, 10 mM reduced Glutathione, pH=8.0 in the elution buffer.

## GENE INFORMATION

**Gene Name** FSTL3 follistatin-like 3 (secreted glycoprotein) [ Homo sapiens ]

**Official Symbol** FSTL3

**Synonyms** FSTL3; follistatin-like 3 (secreted glycoprotein); follistatin-related protein 3; FLRG; follistatin related protein; FSRP; follistatin-like protein 3; follistatin-related gene protein;

**Gene ID** 10272

**mRNA Refseq** NM\_005860

**Protein Refseq** NP\_005851

**MIM** 605343

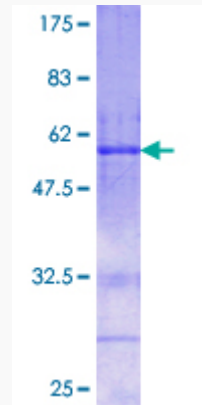
**UniProt ID** O95633

 Tel: 1-631-559-9269 1-516-512-3133

 Email: [info@creative-biomart.com](mailto:info@creative-biomart.com)  Fax: 1-631-938-8127

 45-1 Ramsey Road, Shirley, NY 11967, USA

**Quality Control  
Testing**



12.5% SDS-PAGE Stained with Coomassie Blue

 Tel: 1-631-559-9269 1-516-512-3133

 Email: [info@creative-biomart.com](mailto:info@creative-biomart.com)  Fax: 1-631-938-8127

 45-1 Ramsey Road, Shirley, NY 11967, USA