

Recombinant Full Length Human FSTL3 Protein, C-Flag-tagged

Cat. No. FSTL3-753HFL **Lot. No.** (See product label)

SPECIFICATION

Product Overview	Recombinant Full Length Human FSTL3 Protein, fused to Flag-tag at C-terminus, was expressed in Mammalian cells.
Species	Human
Source	Mammalian Cells
Description	Follistatin-like 3 is a secreted glycoprotein of the follistatin-module-protein family. It may have a role in leukemogenesis.
Form	25 mM Tris HCl, pH 7.3, 100 mM glycine, 10% glycerol.
Molecular Mass	24.9 kDa
AA Sequence	MRPGAPGPLWPLPWGALAWAVGFVSSMGSGNPAPGGVCWLQQGQEATCSLVLQ TDVTRAECASGNIDTA WSNLTHPGNKINLLGFLGLVHCLPCKDSCDGVCEGPGKA CRMLGGRPRCECAPDCSGLPARLQVCGSDGA TYRDECELRAARCRGHPDLSVMY RGRCRKSCEHVVCPRPQSCVVDQGTSAHCVVCRAAPCPVPSSPGQEL CGNNNVTYISSCHMRQATCFLGRSIGVRHAGSCAGTPEEPPGGESAEEEEENFVTRT RPLEQKLISEEDLAANDILDYKDDDDKV
Purity	> 80% as determined by SDS-PAGE and Coomassie blue staining.
Stability	Stable for 12 months from the date of receipt of the product under proper storage and

 Tel: 1-631-559-9269 1-516-512-3133

 Email: info@creative-biomart.com  Fax: 1-631-938-8127

 45-1 Ramsey Road, Shirley, NY 11967, USA

handling conditions. Avoid repeated freeze-thaw cycles.

Storage Store at -80 centigrade.

Concentration >50 ug/mL as determined by microplate BCA method.

Preparation Recombinant protein was captured through anti-DDK affinity column followed by conventional chromatography steps.

Protein Families Secreted Protein

Full Length Full L.

GENE INFORMATION

Gene Name [FSTL3 follistatin like 3 \[Homo sapiens \(human\) \]](#)

Official Symbol [FSTL3](#)

Synonyms FLRG; FSRP

Gene ID [10272](#)

mRNA Refseq [NM_005860.3](#)

Protein Refseq [NP_005851.1](#)

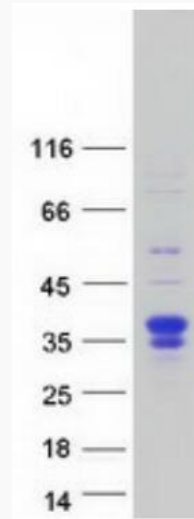
MIM [605343](#)

UniProt ID [O95633](#)

 Tel: 1-631-559-9269 1-516-512-3133

 Email: info@creative-biomart.com  Fax: 1-631-938-8127

 45-1 Ramsey Road, Shirley, NY 11967, USA



Coomassie blue staining of purified FSTL3 protein.

 Tel: 1-631-559-9269 1-516-512-3133

 Email: info@creative-biomart.com  Fax: 1-631-938-8127

 45-1 Ramsey Road, Shirley, NY 11967, USA