

Recombinant Human FTCD Protein, GST-tagged

Cat. No. FTCD-4530H Lot. No. (See product label)

SPECIFICATION

Product Overview	Human FTCD partial ORF (NP_996848, 440 a.a. - 541 a.a.) recombinant protein with GST-tag at N-terminal.
Species	Human
Source	Wheat Germ
Description	FTCD is a bifunctional enzyme that channels 1-carbon units from formiminoglutamate, a metabolite of the histidine degradation pathway, to the folate pool.[supplied by OMIM
Molecular Mass	36.96 kDa
AA Sequence	LQEGLRRAVSVPLTLAETVASLWPALQELARCGNLACRSDLQVAAKALEMGVFGAY FNVLINLRDITDEAFKQIHHRVSSLLQEAKTQAALVLDCLETRQE
Applications	Enzyme-linked Immunoabsorbent Assay Western Blot (Recombinant protein) Antibody Production Protein Array
Notes	Best use within three months from the date of receipt of this protein.
Storage	Store at -80 centigrade. Aliquot to avoid repeated freezing and thawing.

 Tel: 1-631-559-9269 1-516-512-3133

 Email: info@creative-biomart.com  Fax: 1-631-938-8127

 45-1 Ramsey Road, Shirley, NY 11967, USA

Storage Buffer 50 mM Tris-HCl, 10 mM reduced Glutathione, pH=8.0 in the elution buffer.

GENE INFORMATION

Gene Name FTCD formiminotransferase cyclodeaminase [Homo sapiens]

Official Symbol FTCD

Synonyms FTCD; formiminotransferase cyclodeaminase; formimidoyltransferase-cyclodeaminase; formiminotransferase-cyclodeaminase; formimidoyltransferase cyclodeaminase; LCHC1;

Gene ID 10841

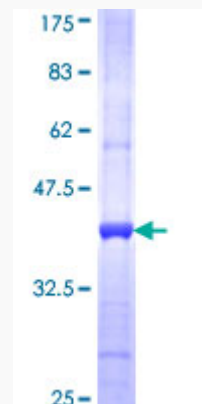
mRNA Refseq NM_006657

Protein Refseq NP_006648

MIM 606806

UniProt ID O95954

Quality Control Testing



Tel: 1-631-559-9269 1-516-512-3133

Email: info@creative-biomart.com Fax: 1-631-938-8127


45-1 Ramsey Road, Shirley, NY 11967, USA



12.5% SDS-PAGE Stained with Coomassie Blue.

 Tel: 1-631-559-9269 1-516-512-3133

 Email: info@creative-biomart.com  Fax: 1-631-938-8127

 45-1 Ramsey Road, Shirley, NY 11967, USA