

# Recombinant Human FTCD Protein, Myc/DDK-tagged, C13 and N15-labeled

**Cat. No.** FTCD-5746H    **Lot. No.** (See product label)

## SPECIFICATION

<b>Product Overview</b>	FTCD MS Standard C13 and N15-labeled recombinant protein (NP_006648) with a C-terminal MYC/DDK tag, was expressed in HEK293 cells.
<b>Species</b>	Human
<b>Source</b>	HEK293
<b>Description</b>	The protein encoded by this gene is a bifunctional enzyme that channels 1-carbon units from formiminoglutamate, a metabolite of the histidine degradation pathway, to the folate pool. Mutations in this gene are associated with glutamate formiminotransferase deficiency. Alternatively spliced transcript variants have been found for this gene.
<b>Molecular Mass</b>	58.9 kDa
<b>AA Sequence</b>	MSQLVECVPNFSEGKNQEVIDAISGAIQTTPGCVLLDVDAGPSTNRTVYTFVGPPEC VVEGALNAARVASRLIDMSRHQGEHPRMGALDVCFFIPVRGVSVDECVLCAQAFGQ RLAEELDVPVYLYGEAARMDSRRTLPAIRAGEYEALPKKLQQADWAPDFGPSSFVP SWGATATGARKFLIAFNINLLGTKEQAHRIALNLREQGRGKDQPGRLKKVQGIGWYL DEKNLAQVSTNLLDFEVTALHTVYEETCREAQELSLPVVGSQVLGLVPLKALLDAAA FYCEKENLFILEEEQRIRLVVSRLGLDSLCPFSPKERIIEYLVPERGPERGLGSKSLRA FVGEVGARSAAPGGGSVAAAAAAMGAALGSMVGLMTYGRRQFQSLDTTMRRLIPP FREASAKLTTLVDADAEAFAYLEAMRLPKNTPEEKDRRTAALQEGLRRAVSVPLTL

 Tel: 1-631-559-9269    1-516-512-3133

 Email: [info@creative-biomart.com](mailto:info@creative-biomart.com)     Fax: 1-631-938-8127

 45-1 Ramsey Road, Shirley, NY 11967, USA

AETVASLWPALQELARCGNLACRSDLQVAAKALEMGVFGAYFNVLINLRDITDEAFK  
 DQIHHRVSSLLQEAKTQAALVLDCLQETRQETRTRPLEQKLISEEDLAANDILDYKDDD  
 DKV

**Purity** > 80% as determined by SDS-PAGE and Coomassie blue staining

**Stability** Stable for 3 months from receipt of products under proper storage and handling conditions.

**Storage** Store at -80 centigrade. Avoid repeated freeze-thaw cycles.

**Concentration** 50 µg/mL as determined by BCA

**Storage Buffer** 100 mM glycine, 25 mM Tris-HCl, pH 7.3.

## GENE INFORMATION

**Gene Name** FTCD formiminotransferase cyclodeaminase [ Homo sapiens (human) ]

**Official Symbol** FTCD

**Synonyms** FTCD; formiminotransferase cyclodeaminase; formimidoyltransferase-cyclodeaminase; formiminotransferase-cyclodeaminase; formimidoyltransferase cyclodeaminase; LCHC1;

**Gene ID** 10841

**mRNA Refseq** NM\_006657

**Protein Refseq** NP\_006648

 Tel: 1-631-559-9269 1-516-512-3133

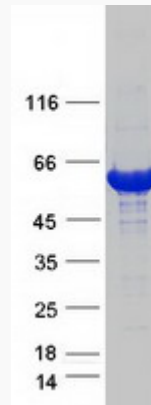
 Email: [info@creative-biomart.com](mailto:info@creative-biomart.com)  Fax: 1-631-938-8127

 45-1 Ramsey Road, Shirley, NY 11967, USA

**MIM** 606806

**UniProt ID** O95954

**SDS-PAGE**



 Tel: 1-631-559-9269 1-516-512-3133

 Email: [info@creative-biomart.com](mailto:info@creative-biomart.com)  Fax: 1-631-938-8127

 45-1 Ramsey Road, Shirley, NY 11967, USA