

Recombinant Human FTH1 Protein, Myc/DDK-tagged, C13 and N15-labeled

Cat. No. FTH1-1941H **Lot. No.** (See product label)

SPECIFICATION

Product Overview	FTH1 MS Standard C13 and N15-labeled recombinant protein (NP_002023) with a C-terminal MYC/DDK tag, was expressed in HEK293 cells.
Species	Human
Source	HEK293
Description	This gene encodes the heavy subunit of ferritin, the major intracellular iron storage protein in prokaryotes and eukaryotes. It is composed of 24 subunits of the heavy and light ferritin chains. Variation in ferritin subunit composition may affect the rates of iron uptake and release in different tissues. A major function of ferritin is the storage of iron in a soluble and nontoxic state. Defects in ferritin proteins are associated with several neurodegenerative diseases. This gene has multiple pseudogenes. Several alternatively spliced transcript variants have been observed, but their biological validity has not been determined.
Molecular Mass	21.2 kDa
AA Sequence	MTTASTSQVRQNYHQDSEAAINRQINLELYASYVYLSMSYYFDRDDVALKNFAKYFL HQSHEEREHAEKLMKLNQRGGRIFLQDIKKPDCDDWESGLNAMECALHLEKNVN QSLLELHKLATDKNDPHLCDFIETHYLNEQVKAIKELGDHVTNLRKMGAPESGLAEYL FDKHTLGSDNSTRTRPLEQKLISEEDLAANDILDYKDDDDKV
Purity	> 80% as determined by SDS-PAGE and Coomassie blue staining

 Tel: 1-631-559-9269 1-516-512-3133

 Email: info@creative-biomart.com  Fax: 1-631-938-8127

 45-1 Ramsey Road, Shirley, NY 11967, USA

Stability	Stable for 3 months from receipt of products under proper storage and handling conditions.
Storage	Store at -80 centigrade. Avoid repeated freeze-thaw cycles.
Concentration	50 µg/mL as determined by BCA
Storage Buffer	100 mM glycine, 25 mM Tris-HCl, pH 7.3.

GENE INFORMATION

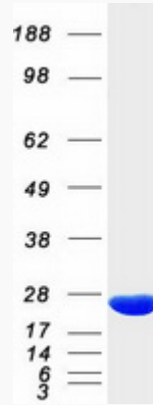
Gene Name	FTH1 ferritin heavy chain 1 [Homo sapiens (human)]
Official Symbol	FTH1
Synonyms	FTH1; ferritin, heavy polypeptide 1; FTHL6; ferritin heavy chain; apoferritin; FHC; FTH; PIG15; placenta immunoregulatory factor; PLIF; proliferation inducing protein 15; ferritin H subunit; proliferation-inducing protein 15; cell proliferation-inducing gene 15 protein; MGC104426;
Gene ID	2495
mRNA Refseq	NM_002032
Protein Refseq	NP_002023
MIM	134770
UniProt ID	P02794

 Tel: 1-631-559-9269 1-516-512-3133

 Email: info@creative-biomart.com  Fax: 1-631-938-8127

 45-1 Ramsey Road, Shirley, NY 11967, USA

SDS-PAGE



 Tel: 1-631-559-9269 1-516-512-3133

 Email: info@creative-biomart.com  Fax: 1-631-938-8127

 45-1 Ramsey Road, Shirley, NY 11967, USA