

Recombinant Horse FTH1 Protein, His-tagged

Cat. No. FTH1-2775H Lot. No. (See product label)

SPECIFICATION

Product Overview	Recombinant Horse FTH1 Protein (Met1-Ser182) with N-His tag was expressed in E. coli.
Species	Horse
Source	E.coli
ProteinLength	Met1-Ser182
Description	Stores iron in a soluble, non-toxic, readily available form. Important for iron homeostasis. Has ferroxidase activity. Iron is taken up in the ferrous form and deposited as ferric hydroxides after oxidation. Also plays a role in delivery of iron to cells. Mediates iron uptake in capsule cells of the developing kidney (By similarity).
Form	Freeze-dried powder
Molecular Mass	Predicted Molecular Mass: 24.7 kDa Accurate Molecular Mass: 27 kDa
Purity	> 90%
Applications	Positive Control; Immunogen; SDS-PAGE; WB.
Stability	The thermal stability is described by the loss rate. The loss rate was determined by accelerated thermal degradation test, that is, incubate the protein at 37 centigrade for

 Tel: 1-631-559-9269 1-516-512-3133

 Email: info@creative-biomart.com  Fax: 1-631-938-8127

 45-1 Ramsey Road, Shirley, NY 11967, USA

48h, and no obvious degradation and precipitation were observed. The loss rate is less than 5% within the expiration date under appropriate storage condition.

Storage

Avoid repeated freeze/thaw cycles. Store at 2-8 centigrade for one month. Aliquot and store at -80 centigrade for 12 months.

Storage Buffer

20mM Tris, 150mM NaCl, pH8.0, containing 1mM EDTA, 1mM DTT, 0.01% SKL, 5% Trehalose and Proclin300.

Reconstitution

Reconstitute in 20mM Tris, 150mM NaCl (pH8.0) to a concentration of 0.1-1.0 mg/mL. Do not vortex.

GENE INFORMATION

Gene Name

[FTH1 ferritin heavy chain 1 \[Equus caballus \(horse\) \]](#)

Official Symbol

[FTH1](#)

Synonyms

FTH1; ferritin heavy chain 1; ferritin heavy chain; apoferritin; ferritin H subunit; ferritin, heavy polypeptide 1; EC 1.16.3.1

Gene ID

[100062811](#)

mRNA Refseq

[NM_001252054](#)

Protein Refseq

[NP_001238983](#)

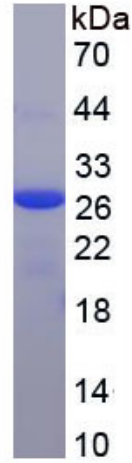
UniProt ID

[Q8MIP0](#)

 Tel: 1-631-559-9269 1-516-512-3133

 Email: info@creative-biomart.com  Fax: 1-631-938-8127

 45-1 Ramsey Road, Shirley, NY 11967, USA



Tel: 1-631-559-9269 1-516-512-3133

Email: info@creative-biomart.com Fax: 1-631-938-8127

45-1 Ramsey Road, Shirley, NY 11967, USA