

Recombinant Human FTH1 Protein (Met1-Ser183), N-His tagged

Cat. No. FTH1-3038H **Lot. No.** (See product label)

SPECIFICATION

Product Overview	Recombinant human FTH1 (Met1-Ser183) protein fused with the N-terminal His tag was expressed in E. coli.
Species	Human
Source	E.coli
ProteinLength	Met1-Ser183
Description	This gene encodes the heavy subunit of ferritin, the major intracellular iron storage protein in prokaryotes and eukaryotes. It is composed of 24 subunits of the heavy and light ferritin chains. Variation in ferritin subunit composition may affect the rates of iron uptake and release in different tissues. A major function of ferritin is the storage of iron in a soluble and nontoxic state. Defects in ferritin proteins are associated with several neurodegenerative diseases. This gene has multiple pseudogenes. Several alternatively spliced transcript variants have been observed, but their biological validity has not been determined.
Molecular Mass	20.13 kDa
Purity	>90 % as determined by SDS-PAGE.
Notes	For research use only.

 Tel: 1-631-559-9269 1-516-512-3133

 Email: info@creative-biomart.com  Fax: 1-631-938-8127

 45-1 Ramsey Road, Shirley, NY 11967, USA

Storage	Use a manual defrost freezer and avoid repeated freeze thaw cycles. Store at 2 to 8 centigrade for one week. Store at -20 to -80 centigrade for twelve months from the date of receipt.
Storage Buffer	Supplied as solution form in PBS or lyophilized from PBS.
Reconstitution	Reconstitute in sterile water for a stock solution.
Shipping	In general, proteins are provided as lyophilized powder/frozen liquid. They are shipped out with dry ice/blue ice unless customers require otherwise.

GENE INFORMATION

Gene Name	FTH1 ferritin, heavy polypeptide 1 [Homo sapiens (human)]
Official Symbol	FTH1
Synonyms	FTH1; ferritin, heavy polypeptide 1; FTHL6; ferritin heavy chain; apoferritin; FHC; FTH; PIG15; placenta immunoregulatory factor; PLIF; proliferation inducing protein 15; ferritin H subunit; proliferation-inducing protein 15; cell proliferation-inducing gene 15 protein; MGC104426;
Gene ID	2495
mRNA Refseq	NM_002032
Protein Refseq	NP_002023
MIM	134770
UniProt ID	P02794

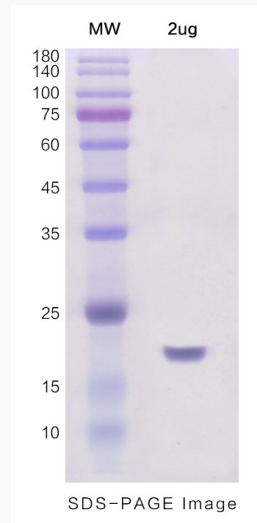
 Tel: 1-631-559-9269 1-516-512-3133

 Email: info@creative-biomart.com  Fax: 1-631-938-8127

 45-1 Ramsey Road, Shirley, NY 11967, USA



SDS-PAGE



Tel: 1-631-559-9269 1-516-512-3133

Email: info@creative-biomart.com Fax: 1-631-938-8127

45-1 Ramsey Road, Shirley, NY 11967, USA