

# Recombinant Full Length Human FTH1 Protein, C-Flag-tagged

Cat. No. FTH1-410HFL Lot. No. (See product label)

## SPECIFICATION

**Product Overview** Recombinant Full Length Human FTH1 Protein, fused to Flag-tag at C-terminus, was expressed in Mammalian cells.

**Species** Human

**Source** Mammalian Cells

**Description** This gene encodes the heavy subunit of ferritin, the major intracellular iron storage protein in prokaryotes and eukaryotes. It is composed of 24 subunits of the heavy and light ferritin chains. Variation in ferritin subunit composition may affect the rates of iron uptake and release in different tissues. A major function of ferritin is the storage of iron in a soluble and nontoxic state. Defects in ferritin proteins are associated with several neurodegenerative diseases. This gene has multiple pseudogenes. Several alternatively spliced transcript variants have been observed, but their biological validity has not been determined.

**Form** 25 mM Tris HCl, pH 7.3, 100 mM glycine, 10% glycerol.

**Molecular Mass** 21 kDa

**AA Sequence**  
 MTTASTSQVRQNYHQDSEAAINRQINLELYASYVYLSMSYYFDRDDVALKNFAKYFL  
 HQSHEEREHA EKL MKLQNQRGGRIFLQDIKKPDCDDWESGLNAMECALHLEKNVN  
 QSLLELHKLATDKNDPHLCDFIETHYLN  
 EQVKAIKELGDHVTNLRKMGAPESGLAEYLFDKHTLGDSDNESTRTRPLEQKLISEE  
 DLAANDILDYKDDDDKV

 Tel: 1-631-559-9269 1-516-512-3133

 Email: [info@creative-biomart.com](mailto:info@creative-biomart.com)  Fax: 1-631-938-8127

 45-1 Ramsey Road, Shirley, NY 11967, USA

<b>Purity</b>	> 80% as determined by SDS-PAGE and Coomassie blue staining.
<b>Stability</b>	Stable for 12 months from the date of receipt of the product under proper storage and handling conditions. Avoid repeated freeze-thaw cycles.
<b>Storage</b>	Store at -80 centigrade.
<b>Concentration</b>	>50 ug/mL as determined by microplate BCA method.
<b>Preparation</b>	Recombinant protein was captured through anti-DDK affinity column followed by conventional chromatography steps.
<b>Protein Families</b>	Druggable Genome
<b>Protein Pathways</b>	Porphyrin and chlorophyll metabolism
<b>Full Length</b>	Full L.

## GENE INFORMATION

<b>Gene Name</b>	<a href="#">FTH1 ferritin heavy chain 1 [ Homo sapiens (human) ]</a>
<b>Official Symbol</b>	<a href="#">FTH1</a>
<b>Synonyms</b>	FHC; FTH; HFE5; PLIF; FTHL6; PIG15
<b>Gene ID</b>	<a href="#">2495</a>
<b>mRNA Refseq</b>	<a href="#">NM_002032.3</a>
<b>Protein Refseq</b>	<a href="#">NP_002023.2</a>

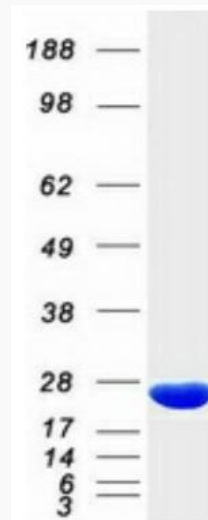
 Tel: 1-631-559-9269 1-516-512-3133

 Email: [info@creative-biomart.com](mailto:info@creative-biomart.com)  Fax: 1-631-938-8127

 45-1 Ramsey Road, Shirley, NY 11967, USA

**MIM** 134770

**UniProt ID** P02794



Coomassie blue staining of purified FTH1 protein.

 Tel: 1-631-559-9269 1-516-512-3133

 Email: [info@creative-biomart.com](mailto:info@creative-biomart.com)  Fax: 1-631-938-8127

 45-1 Ramsey Road, Shirley, NY 11967, USA