

Recombinant Human FTH1

Cat. No. FTH1-528H **Lot. No.** (See product label)

SPECIFICATION

Product Overview	Recombinant FTH1 protein was expressed in <i>E.coli</i> and purified by using conventional chromatography techniques. MW = 21kDa (183aa).
Species	Human
Source	E.coli
Protein Length	1-183 aa
Description	Ferritin, heavy polypeptide 1 (FTH1) is a ubiquitous protein which plays a major role in iron sequestration, detoxification and storage. FTH1 is found in all living species. FTH1 encodes the heavy subunit of ferritin, the major intracellular iron storage protein in prokaryotes and eukaryotes. It is composed of 24 subunits of the heavy and light ferritin chains.
Amino Acid Sequence	MTTASTSQVR QNYHQDSEAA INRQINLELY ASYVYLSMSY YFDRDDVALK NFAKYFLHQS HEEREHAEKL MKLQNQRGGR IFLQDIKKPD CDDWESGLNA MECALHLEKN VNQSLLELHK LATDKNDPHL CDFIETHYLN EQVKAIKELG DHVTNLRKMG APESGLAEYL FDKHTLGDSD NES.
Form	Liquid. In 20 mM Tris-HCl buffer (pH 7.5) containing 1 mM DTT, 10% glycerol.
Purity	> 95% by SDS – PAGE.
Concentration	1 mg/ml (determined by Bradford assay).

 Tel: 1-631-559-9269 1-516-512-3133

 Email: info@creative-biomart.com  Fax: 1-631-938-8127

 45-1 Ramsey Road, Shirley, NY 11967, USA

Storage Can be stored at +4°C short term (1-2 weeks). For long term storage, aliquot and store at -20°C or -70°C. Avoid repeated freezing and thawing cycles.

Pathways Porphyrin and chlorophyll metabolism; Membrane Trafficking

GENE INFORMATION

Gene Name [FTH1 ferritin, heavy polypeptide 1 \[Homo sapiens \]](#)

Synonyms ferritin, heavy polypeptide 1; FHC; FTH; PLIF; FTHL6; PIG15; MGC104426; FTH1; apoferritin; placenta immunoregulatory factor; proliferation-inducing protein 15; EC 1.16.3.1; apoferritin; Ferritin H subunit

Gene ID [2495](#)

mRNA Refseq [NM_002032](#)

Protein Refseq [NP_002023](#)

MIM [134770](#)

UniProt ID [P02794](#)

Chromosome Location 11q13

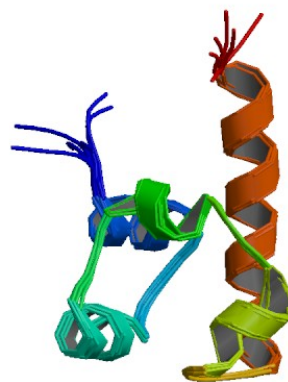
Function ferric iron binding; ferroxidase activity; oxidoreductase activity; protein binding

 Tel: 1-631-559-9269 1-516-512-3133

 Email: info@creative-biomart.com  Fax: 1-631-938-8127

 45-1 Ramsey Road, Shirley, NY 11967, USA

PDB rendering based
on 1fha.



 Tel: 1-631-559-9269 1-516-512-3133

 Email: info@creative-biomart.com  Fax: 1-631-938-8127

 45-1 Ramsey Road, Shirley, NY 11967, USA