

Recombinant Human FTO Protein, His-tagged

Cat. No. FTO-14H Lot. No. (See product label)

SPECIFICATION

Product Overview	Recombinant human FTO protein (32-505) with a N-terminal His-tag was expressed in E. coli.
Species	Human
Source	E.coli
ProteinLength	32-505
Description	This gene is a nuclear protein of the AlkB related non-haem iron and 2-oxoglutarate-dependent oxygenase superfamily but the exact physiological function of this gene is not known. Other non-heme iron enzymes function to reverse alkylated DNA and RNA damage by oxidative demethylation. Studies in mice and humans indicate a role in nervous and cardiovascular systems and a strong association with body mass index, obesity risk, and type 2 diabetes.
Form	50 mM HEPES, pH 8.0, with 150 mM sodium chloride and 10% glycerol
Molecular Mass	56.68 kDa
Purity	≥80% estimated by SDS-PAGE
Applications	WB
Stability	≥ 1 year

 Tel: 1-631-559-9269 1-516-512-3133

 Email: info@creative-biomart.com  Fax: 1-631-938-8127

 45-1 Ramsey Road, Shirley, NY 11967, USA

Storage Store at -80 centigrade

GENE INFORMATION

Gene Name [FTO FTO alpha-ketoglutarate dependent dioxygenase \[Homo sapiens \(human\) \]](#)

Official Symbol [FTO](#)

Synonyms FTO; FTO alpha-ketoglutarate dependent dioxygenase; GDFD; ALKBH9; BMIQ14; alpha-ketoglutarate-dependent dioxygenase FTO; AlkB homolog 9; U6 small nuclear RNA (2'-O-methyladenosine-N(6)-)-demethylase FTO; U6 small nuclear RNA N(6)-methyladenosine-demethylase FTO; fat mass and obesity associated; fat mass and obesity-associated protein; m6A(m)-demethylase FTO; mRNA (2'-O-methyladenosine-N(6)-)-demethylase FTO; mRNA N(6)-methyladenosine demethylase FTO; tRNA N1-methyl adenine demethylase FTO

Gene ID [79068](#)

mRNA Refseq [NM_001080432](#)

Protein Refseq [NP_001073901](#)

MIM [610966](#)

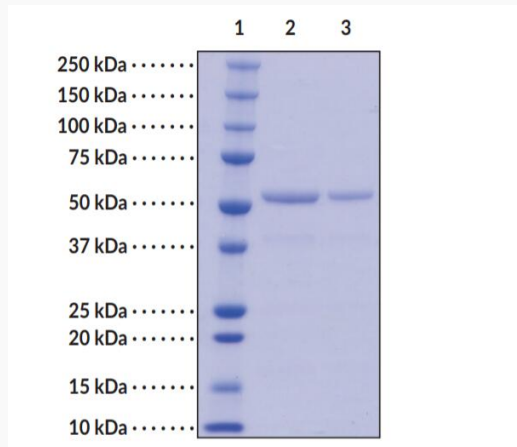
UniProt ID [Q9C0B1](#)

 Tel: 1-631-559-9269 1-516-512-3133

 Email: info@creative-biomart.com  Fax: 1-631-938-8127

 45-1 Ramsey Road, Shirley, NY 11967, USA

SDS-PAGE of FTO



Lane 1: MW Markers, Lane 2: FTO (4 g), Lane 3: FTO (2 g). Representative gel image shown; actual purity may vary between each batch.

 Tel: 1-631-559-9269 1-516-512-3133

 Email: info@creative-biomart.com  Fax: 1-631-938-8127

 45-1 Ramsey Road, Shirley, NY 11967, USA