

# Recombinant Full Length Human FTO Protein, C-Flag-tagged

Cat. No. FTO-330HFL Lot. No. (See product label)

## SPECIFICATION

<b>Product Overview</b>	Recombinant Full Length Human FTO Protein, fused to Flag-tag at C-terminus, was expressed in Mammalian cells.
<b>Species</b>	Human
<b>Source</b>	Mammalian Cells
<b>Description</b>	This gene is a nuclear protein of the AlkB related non-haem iron and 2-oxoglutarate-dependent oxygenase superfamily but the exact physiological function of this gene is not known. Other non-heme iron enzymes function to reverse alkylated DNA and RNA damage by oxidative demethylation. Studies in mice and humans indicate a role in nervous and cardiovascular systems and a strong association with body mass index, obesity risk, and type 2 diabetes.
<b>Form</b>	25 mM Tris HCl, pH 7.3, 100 mM glycine, 10% glycerol.
<b>Molecular Mass</b>	58.1 kDa
<b>AA Sequence</b>	MKRTPTAEEREREAKLRLLEELEDTWLPYLTPKDDDEFYQQWQLKYPKLILREASSV SEELHKEVQEAFLLHKGCLFRDLVRIQGGKDLLTPVSRILIGNPGCTYKYLNTRLFT VPWPVKGSNIKHTAEIAAACETFLKLNDYLQIETIQALEELAAKEKANEDAVPLCMS ADFP RVGMGSSYNGQDEVDIKSRAAYNVTLLNFMDPQKMPYLKEEPYFGMGKMA VSWHHDENLVDRSAVAVYSYSCEGPEEESEDDSHLEGRDPDIWHVGFKISWDIET PGLAIPLHQGDCYFMLDDLNATHQHCVLAGSQPRFSSTHRVAECSTGTLDYILQRC QLALQNVCCDDVDNDDVSLKSFEPVLKQGEEIHNEVEFEWLRQFWFGNRYRKCT

 Tel: 1-631-559-9269 1-516-512-3133

 Email: [info@creative-biomart.com](mailto:info@creative-biomart.com)  Fax: 1-631-938-8127

 45-1 Ramsey Road, Shirley, NY 11967, USA

DWWCQPMAQLEALWKKMEGVTNAVLHE VKREGLPVEQRNEILTALASLTARQNL  
 RREWHARCQSRIARTLPADQKPECRPYWEKDDASMPLPFDLT  
 DIVSELRGQLLEAKPTRTRPLEQKLISEEDLAANDILDYKDDDDKV

**Purity** > 80% as determined by SDS-PAGE and Coomassie blue staining.

**Stability** Stable for 12 months from the date of receipt of the product under proper storage and handling conditions. Avoid repeated freeze-thaw cycles.

**Storage** Store at -80 centigrade.

**Concentration** >50 ug/mL as determined by microplate BCA method.

**Preparation** Recombinant protein was captured through anti-DDK affinity column followed by conventional chromatography steps.

**Full Length** Full L.

## GENE INFORMATION

**Gene Name** [FTO](#) [FTO](#) alpha-ketoglutarate dependent dioxygenase [ Homo sapiens (human) ]

**Official Symbol** [FTO](#)

**Synonyms** GDFD; ALKBH9; BMIQ14

**Gene ID** [79068](#)

**mRNA Refseq** [NM\\_001080432.3](#)

**Protein Refseq** [NP\\_001073901.1](#)

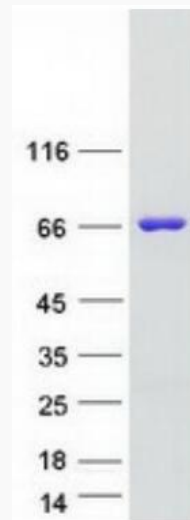
 Tel: 1-631-559-9269 1-516-512-3133

 Email: [info@creative-biomart.com](mailto:info@creative-biomart.com)  Fax: 1-631-938-8127

 45-1 Ramsey Road, Shirley, NY 11967, USA

**MIM** 610966

**UniProt ID** Q9C0B1



Coomassie blue staining of purified FTO protein.

 Tel: 1-631-559-9269 1-516-512-3133

 Email: [info@creative-biomart.com](mailto:info@creative-biomart.com)  Fax: 1-631-938-8127

 45-1 Ramsey Road, Shirley, NY 11967, USA